



ELECTRONIC COPY

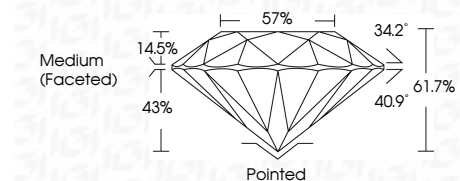
LG774649990
Report verification at igi.org



April 16, 2026
IGI Report Number LG774649990
Description LABORATORY GROWN DIAMOND
Shape and Cutting Style ROUND BRILLIANT
Measurements 6.43 - 6.45 X 3.97 MM

GRADING RESULTS

Carat Weight 1.01 CARAT
Color Grade D
Clarity Grade VVS 1
Cut Grade IDEAL

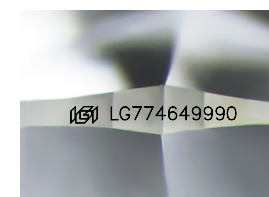


ADDITIONAL GRADING INFORMATION

Polish EXCELLENT
Symmetry EXCELLENT
Fluorescence NONE
Inscription(s) IGI LG774649990
Comments: HEARTS & ARROWS
This Laboratory Grown Diamond was created by Chemical Vapor Deposition (CVD) growth process. Type IIa

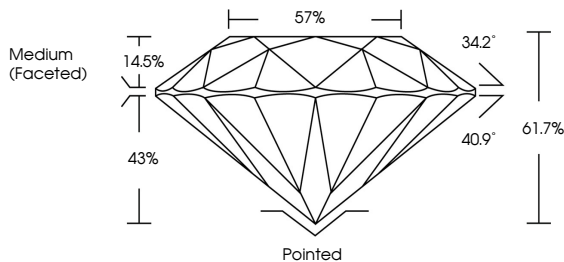


April 16, 2026
IGI Report No LG774649990
ROUND BRILLIANT
6.43 - 6.45 X 3.97 MM
1.01 CARAT
D
VVS 1
IDEAL
61.7%
57%
Medium (Faceted)
Pointed
EXCELLENT
EXCELLENT
NONE
IGI LG774649990
Comments: HEARTS & ARROWS
This Laboratory Grown Diamond was created by Chemical Vapor Deposition (CVD) growth process. Type IIa

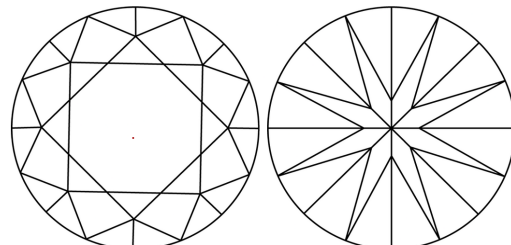


Sample Image Used

PROPORTIONS



CLARITY CHARACTERISTICS



KEY TO SYMBOLS

Red symbols indicate internal characteristics.
Green symbols indicate external characteristics.



COLOR

Color scale table from D to Light

CLARITY

Clarity scale table from FL to Included

