



**INTERNATIONAL  
GEMOLOGICAL  
INSTITUTE**

**ELECTRONIC COPY**

**LABORATORY GROWN DIAMOND REPORT**

February 19, 2026  
 IGI Report Number **LG774643762**  
 Description **LABORATORY GROWN DIAMOND**  
 Shape and Cutting Style **EMERALD CUT**  
 Measurements **5.67 X 3.78 X 2.44 MM**

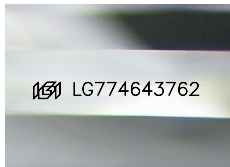
**GRADING RESULTS**

Carat Weight **0.54 CARAT**  
 Color Grade **FANCY LIGHT PINKISH BROWN**  
 Clarity Grade **VVS 2**

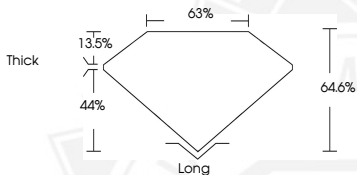
**ADDITIONAL GRADING INFORMATION**

Polish **EXCELLENT**  
 Symmetry **VERY GOOD**  
 Fluorescence **VERY SLIGHT**  
 Inscription(s) **IGI LG774643762**

Comments: This Laboratory Grown Diamond was created by Chemical Vapor Deposition (CVD) growth process. Indications of post-growth treatment.



Sample Image Used



February 19, 2026  
 IGI Report Number **LG774643762**  
 EMERALD CUT  
 LABORATORY GROWN DIAMOND  
 5.67 X 3.78 X 2.44 MM  
 Carat Weight **0.54 CARAT**  
 Color Grade **FANCY LIGHT PINKISH BROWN**  
 Clarity Grade **VVS 2**  
 Polish **EXCELLENT**  
 Symmetry **VERY GOOD**  
 Fluorescence **VERY SLIGHT**  
 Inscription(s) **IGI LG774643762**

Comments: This Laboratory Grown Diamond was created by Chemical Vapor Deposition (CVD) growth process. Indications of post-growth treatment.



February 19, 2026  
 IGI Report Number **LG774643762**  
 EMERALD CUT  
 LABORATORY GROWN DIAMOND  
 5.67 X 3.78 X 2.44 MM  
 Carat Weight **0.54 CARAT**  
 Color Grade **FANCY LIGHT PINKISH BROWN**  
 Clarity Grade **VVS 2**  
 Polish **EXCELLENT**  
 Symmetry **VERY GOOD**  
 Fluorescence **VERY SLIGHT**  
 Inscription(s) **IGI LG774643762**

Comments: This Laboratory Grown Diamond was created by Chemical Vapor Deposition (CVD) growth process. Indications of post-growth treatment.



THIS DOCUMENT WAS PRODUCED WITH THE FOLLOWING SECURITY MEASURES: SPECIAL DOCUMENT PAPER, INK SCREENS, WATERMARK, BACKGROUND DESIGNS, HOLOGRAM AND OTHER SECURITY FEATURES NOT LISTED AND DO EXCEED DOCUMENT SECURITY INDUSTRY GUIDELINES.

For terms & conditions and to verify this report, please visit [www.igi.org](http://www.igi.org)