



LABORATORY GROWN DIAMOND REPORT

February 19, 2026
 IGI Report Number **LG774643755**
 Description **LABORATORY GROWN DIAMOND**
 Shape and Cutting Style **RECTANGULAR PRINCESS**
 Measurements **5.63 X 5.11 X 3.54 MM**

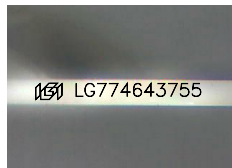
GRADING RESULTS

Carat Weight **0.92 CARAT**
 Color Grade **FANCY PINK BROWN**
 Clarity Grade **VS 1**

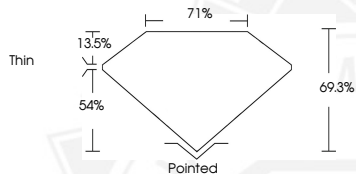
ADDITIONAL GRADING INFORMATION

Polish **EXCELLENT**
 Symmetry **VERY GOOD**
 Fluorescence **SLIGHT**
 Inscription(s) **IGI LG774643755**

Comments: This Laboratory Grown Diamond was created by
 Chemical Vapor Deposition (CVD) growth process.
 Indications of post-growth treatment.



Sample Image Used



February 19, 2026
 IGI Report Number **LG774643755**
RECTANGULAR PRINCESS
LABORATORY GROWN DIAMOND
5.63 X 5.11 X 3.54 MM
 Carat Weight **0.92 CARAT**
 Color Grade **FANCY PINK BROWN**
 Clarity Grade **VS 1**
 Polish **EXCELLENT**
 Symmetry **VERY GOOD**
 Fluorescence **SLIGHT**
 Inscription(s) **IGI LG774643755**

Comments: This Laboratory Grown
 Diamond was created by
 Chemical Vapor Deposition (CVD)
 growth process. Indications of
 post-growth treatment.



February 19, 2026
 IGI Report Number **LG774643755**
RECTANGULAR PRINCESS
LABORATORY GROWN DIAMOND
5.63 X 5.11 X 3.54 MM
 Carat Weight **0.92 CARAT**
 Color Grade **FANCY PINK BROWN**
 Clarity Grade **VS 1**
 Polish **EXCELLENT**
 Symmetry **VERY GOOD**
 Fluorescence **SLIGHT**
 Inscription(s) **IGI LG774643755**

Comments: This Laboratory Grown
 Diamond was created by
 Chemical Vapor Deposition (CVD)
 growth process. Indications of
 post-growth treatment.



THIS DOCUMENT WAS PRODUCED WITH THE FOLLOWING SECURITY MEASURES: SPECIAL DOCUMENT PAPER, INK SCREENS, WATERMARK, BACKGROUND DESIGNS, HOLOGRAM AND OTHER SECURITY FEATURES NOT LISTED AND DO EXCEED DOCUMENT SECURITY INDUSTRY GUIDELINES.