



LABORATORY GROWN DIAMOND REPORT

February 21, 2026
 IGI Report Number **LG774632902**
 Description **LABORATORY GROWN DIAMOND**
 Shape and Cutting Style **OVAL BRILLIANT**
 Measurements **7.41 X 4.81 X 2.60 MM**

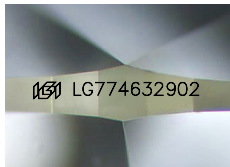
GRADING RESULTS

Carat Weight **0.58 CARAT**
 Color Grade **FANCY YELLOW**
 Clarity Grade **VS 1**

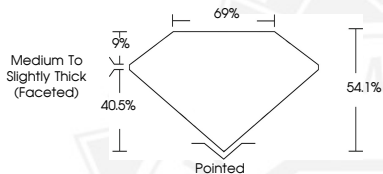
ADDITIONAL GRADING INFORMATION

Polish **VERY GOOD**
 Symmetry **VERY GOOD**
 Fluorescence **NONE**
 Inscription(s) **IGI LG774632902**

Comments: This Laboratory Grown Diamond was created by Chemical Vapor Deposition (CVD) growth process.



Sample Image Used



February 21, 2026
 IGI Report Number **LG774632902**
OVAL BRILLIANT
LABORATORY GROWN DIAMOND
7.41 X 4.81 X 2.60 MM
 Carat Weight **0.58 CARAT**
 Color Grade **FANCY YELLOW**
 Clarity Grade **VS 1**
 Polish **VERY GOOD**
 Symmetry **VERY GOOD**
 Fluorescence **NONE**
 Inscription(s) **IGI LG774632902**

Comments: This Laboratory Grown Diamond was created by Chemical Vapor Deposition (CVD) growth process.



February 21, 2026
 IGI Report Number **LG774632902**
OVAL BRILLIANT
LABORATORY GROWN DIAMOND
7.41 X 4.81 X 2.60 MM
 Carat Weight **0.58 CARAT**
 Color Grade **FANCY YELLOW**
 Clarity Grade **VS 1**
 Polish **VERY GOOD**
 Symmetry **VERY GOOD**
 Fluorescence **NONE**
 Inscription(s) **IGI LG774632902**

Comments: This Laboratory Grown Diamond was created by Chemical Vapor Deposition (CVD) growth process.

THIS DOCUMENT WAS PRODUCED WITH THE FOLLOWING SECURITY MEASURES: SPECIAL DOCUMENT PAPER, INK SCREENS, WATERMARK, BACKGROUND DESIGNS, HOLOGRAM AND OTHER SECURITY FEATURES NOT LISTED AND DO EXCEED DOCUMENT SECURITY INDUSTRY GUIDELINES.