



February 17, 2026

IGI Report Number **LG774629215**

**ROUND BRILLIANT
LABORATORY GROWN DIAMOND**
5.13 - 5.15 X 3.21 MM

| | |
|----------------|------------------------|
| Carat Weight | 0.53 CARAT |
| Color Grade | D |
| Clarity Grade | VVS 2 |
| Cut Grade | IDEAL |
| Polish | EXCELLENT |
| Symmetry | EXCELLENT |
| Fluorescence | NONE |
| Inscription(s) | IGI LG774629215 |

Comments: As Grown - No indication of post-growth treatment. This Laboratory Grown Diamond was created by High Pressure High Temperature (HPHT) growth process. Type II

LABORATORY GROWN DIAMOND REPORT

February 17, 2026

IGI Report Number **LG774629215**

Description **LABORATORY GROWN DIAMOND**

Shape and Cutting Style **ROUND BRILLIANT**

Measurements **5.13 - 5.15 X 3.21 MM**

GRADING RESULTS

Carat Weight **0.53 CARAT**

Color Grade **D**

Clarity Grade **VVS 2**

Cut Grade **IDEAL**

ADDITIONAL GRADING INFORMATION

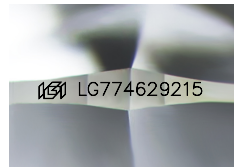
Polish **EXCELLENT**

Symmetry **EXCELLENT**

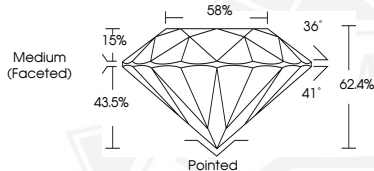
Fluorescence **NONE**

Inscription(s) **IGI LG774629215**

Comments: As Grown - No indication of post-growth treatment. This Laboratory Grown Diamond was created by High Pressure High Temperature (HPHT) growth process. Type II



Sample Image Used



February 17, 2026

IGI Report Number **LG774629215**

**ROUND BRILLIANT
LABORATORY GROWN DIAMOND**
5.13 - 5.15 X 3.21 MM

| | |
|----------------|------------------------|
| Carat Weight | 0.53 CARAT |
| Color Grade | D |
| Clarity Grade | VVS 2 |
| Cut Grade | IDEAL |
| Polish | EXCELLENT |
| Symmetry | EXCELLENT |
| Fluorescence | NONE |
| Inscription(s) | IGI LG774629215 |

Comments: As Grown - No indication of post-growth treatment. This Laboratory Grown Diamond was created by High Pressure High Temperature (HPHT) growth process. Type II



THIS DOCUMENT WAS PRODUCED WITH THE FOLLOWING SECURITY MEASURES: SPECIAL DOCUMENT PAPER, INK SCREENS, WATERMARK, BACKGROUND DESIGNS, HOLOGRAM AND OTHER SECURITY FEATURES NOT LISTED AND DO EXCEED DOCUMENT SECURITY INDUSTRY GUIDELINES.