



ELECTRONIC COPY

LG774625928
Report verification at igi.org



February 14, 2026

IGI Report Number **LG774625928**

Description **LABORATORY GROWN DIAMOND**

Shape and Cutting Style **ROUND BRILLIANT**

Measurements **8.08 - 8.11 X 5.07 MM**

GRADING RESULTS

Carat Weight **2.05 CARATS**

Color Grade **E**

Clarity Grade **VVS 2**

Cut Grade **EXCELLENT**

February 14, 2026

IGI Report Number **LG774625928**

Description **LABORATORY GROWN DIAMOND**

Shape and Cutting Style **ROUND BRILLIANT**

Measurements **8.08 - 8.11 X 5.07 MM**

GRADING RESULTS

Carat Weight **2.05 CARATS**

Color Grade **E**

Clarity Grade **VVS 2**

Cut Grade **EXCELLENT**

ADDITIONAL GRADING INFORMATION

Polish **EXCELLENT**

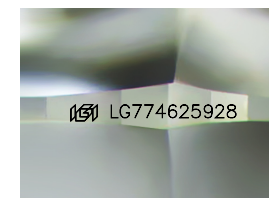
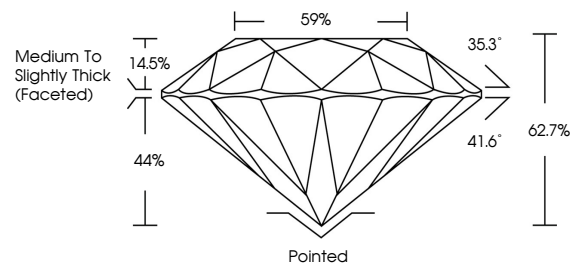
Symmetry **EXCELLENT**

Fluorescence **NONE**

Inscription(s) **LG774625928**

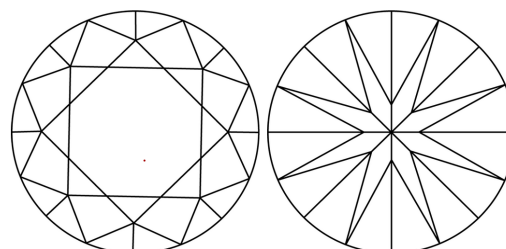
Comments: This Laboratory Grown Diamond was created by Chemical Vapor Deposition (CVD) growth process.
Type IIa

PROPORTIONS



Sample Image Used

CLARITY CHARACTERISTICS



KEY TO SYMBOLS

Red symbols indicate internal characteristics.
Green symbols indicate external characteristics.

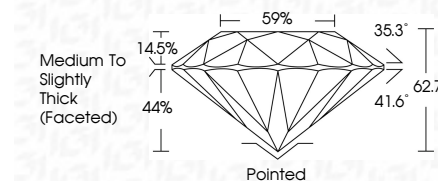
COLOR

D E F G H I J Faint Very Light Light

CLARITY

FL IF VVS¹⁻² VS¹⁻² SI¹⁻² I¹⁻³

Flawless Internally Flawless Very Very Slightly Included Very Slightly Included Slightly Included Included



ADDITIONAL GRADING INFORMATION

Polish **EXCELLENT**

Symmetry **EXCELLENT**

Fluorescence **NONE**

Inscription(s) **LG774625928**

Comments: This Laboratory Grown Diamond was created by Chemical Vapor Deposition (CVD) growth process.
Type IIa



IGI



February 14, 2026	IGI Report No LG774625928	2.05 CARATS	E	VVS 2	62.7%	59%	Medium To Slightly Thick (Faceted)	Pointed	EXCELLENT	EXCELLENT	NONE	LG774625928
ROUND BRILLIANT	8.08 - 8.11 X 5.07 MM	Carat Weight	Color Grade	Clarity Grade	Cut Grade	Depth	Table	Girdle	Polish	Symmetry	Fluorescence	Inscription(s)

Comments: This Laboratory Grown Diamond was created by Chemical Vapor Deposition (CVD) growth process.
Type IIa