



**ELECTRONIC COPY**

LG774620121  
Report verification at igi.org



February 11, 2026

IGI Report Number **LG774620121**

Description **LABORATORY GROWN DIAMOND**

Shape and Cutting Style **ROUND BRILLIANT**

Measurements **10.28 - 10.31 X 6.23 MM**

**GRADING RESULTS**

Carat Weight **4.01 CARATS**

Color Grade **E**

Clarity Grade **VVS 2**

Cut Grade **IDEAL**

February 11, 2026

IGI Report Number **LG774620121**

Description **LABORATORY GROWN DIAMOND**

Shape and Cutting Style **ROUND BRILLIANT**

Measurements **10.28 - 10.31 X 6.23 MM**

**GRADING RESULTS**

Carat Weight **4.01 CARATS**

Color Grade **E**

Clarity Grade **VVS 2**

Cut Grade **IDEAL**

**ADDITIONAL GRADING INFORMATION**

Polish **EXCELLENT**

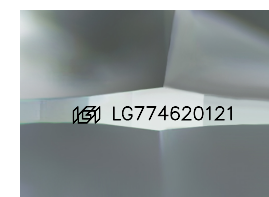
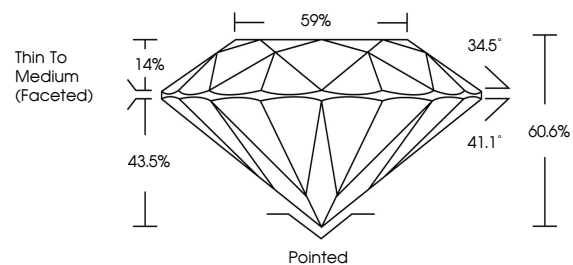
Symmetry **EXCELLENT**

Fluorescence **NONE**

Inscription(s) **IGI LG774620121**

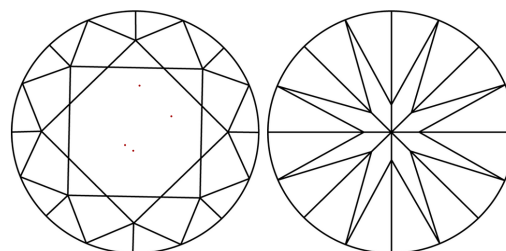
Comments: This Laboratory Grown Diamond was created by Chemical Vapor Deposition (CVD) growth process. Type IIa

**PROPORTIONS**



Sample Image Used

**CLARITY CHARACTERISTICS**



**KEY TO SYMBOLS**

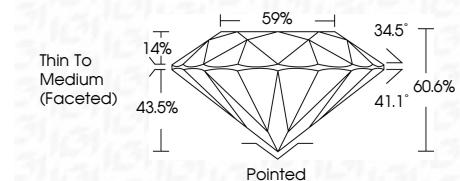
Red symbols indicate internal characteristics.  
Green symbols indicate external characteristics.

**COLOR**

D E F G H I J Faint Very Light Light

**CLARITY**

| FL       | IF                  | VVS <sup>1-2</sup>          | VS <sup>1-2</sup>      | SI <sup>1-2</sup> | I <sup>1-3</sup> |
|----------|---------------------|-----------------------------|------------------------|-------------------|------------------|
| Flawless | Internally Flawless | Very Very Slightly Included | Very Slightly Included | Slightly Included | Included         |



**ADDITIONAL GRADING INFORMATION**

Polish **EXCELLENT**

Symmetry **EXCELLENT**

Fluorescence **NONE**

Inscription(s) **IGI LG774620121**

Comments: This Laboratory Grown Diamond was created by Chemical Vapor Deposition (CVD) growth process. Type IIa



**IGI**



|                        |                                |                    |             |                |                  |                  |             |                          |
|------------------------|--------------------------------|--------------------|-------------|----------------|------------------|------------------|-------------|--------------------------|
| February 11, 2026      | IGI Report No LG774620121      | <b>4.01 CARATS</b> | <b>E</b>    | <b>Pointed</b> | <b>EXCELLENT</b> | <b>EXCELLENT</b> | <b>NONE</b> | <b>IGI LG774620121</b>   |
| <b>ROUND BRILLIANT</b> | <b>10.28 - 10.31 X 6.23 MM</b> | Carat Weight       | Color Grade | Clarity Grade  | Cut Grade        | Depth            | Table       | Thin To Medium (Faceted) |
|                        |                                |                    |             | <b>VVS 2</b>   | <b>IDEAL</b>     | <b>60.6%</b>     | <b>59%</b>  | <b>Pointed</b>           |
|                        |                                |                    |             |                |                  |                  |             | <b>EXCELLENT</b>         |
|                        |                                |                    |             |                |                  |                  |             | <b>EXCELLENT</b>         |
|                        |                                |                    |             |                |                  |                  |             | <b>NONE</b>              |
|                        |                                |                    |             |                |                  |                  |             | <b>NONE</b>              |
|                        |                                |                    |             |                |                  |                  |             | <b>IGI LG774620121</b>   |

Comments: This Laboratory Grown Diamond was created by Chemical Vapor Deposition (CVD) growth process. Type IIa