



ELECTRONIC COPY

LG774618941
Report verification at igi.org



February 17, 2026

IGI Report Number **LG774618941**

Description **LABORATORY GROWN DIAMOND**

Shape and Cutting Style **CUT CORNERED
RECTANGULAR MODIFIED
BRILLIANT**

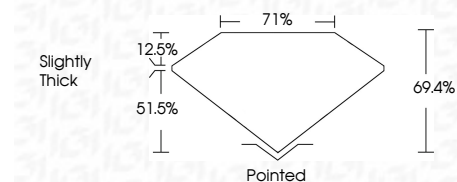
Measurements **10.67 X 7.33 X 5.09 MM**

GRADING RESULTS

Carat Weight **3.77 CARATS**

Color Grade **FANCY INTENSE YELLOW**

Clarity Grade **VS 2**



ADDITIONAL GRADING INFORMATION

Polish **EXCELLENT**

Symmetry **EXCELLENT**

Fluorescence **NONE**

Inscription(s) **IGI LG774618941**

Comments: This Laboratory Grown Diamond was created by Chemical Vapor Deposition (CVD) growth process.



February 17, 2026	IGI Report No LG774618941	CUT CORNERED RECT. MODIFIED BRILLIANT
10.67 X 7.33 X 5.09 MM	3.77 CARATS	FANCY INTENSE YELLOW
VS 2	69.4%	71%
Slightly Thick	Pointed	EXCELLENT
EXCELLENT	EXCELLENT	NONE
IGI LG774618941		

Comments: This Laboratory Grown Diamond was created by Chemical Vapor Deposition (CVD) growth process.

LABORATORY GROWN DIAMOND REPORT

February 17, 2026

IGI Report Number **LG774618941**

Description **LABORATORY GROWN DIAMOND**

Shape and Cutting Style **CUT CORNERED RECTANGULAR
MODIFIED BRILLIANT**

Measurements **10.67 X 7.33 X 5.09 MM**

GRADING RESULTS

Carat Weight **3.77 CARATS**

Color Grade **FANCY INTENSE YELLOW**

Clarity Grade **VS 2**

ADDITIONAL GRADING INFORMATION

Polish **EXCELLENT**

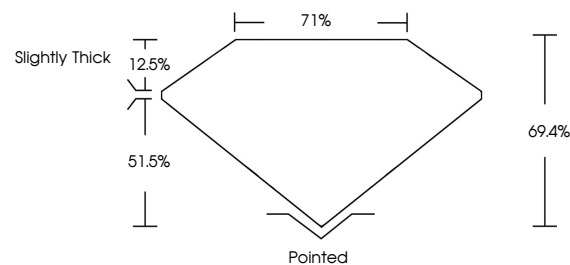
Symmetry **EXCELLENT**

Fluorescence **NONE**

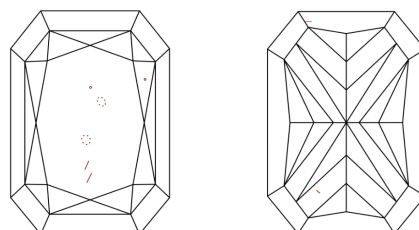
Inscription(s) **IGI LG774618941**

Comments: This Laboratory Grown Diamond was created by Chemical Vapor Deposition (CVD) growth process.

PROPORTIONS

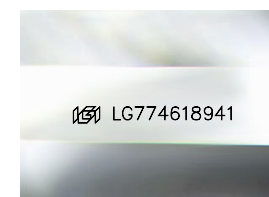


CLARITY CHARACTERISTICS



KEY TO SYMBOLS

Red symbols indicate internal characteristics.
Green symbols indicate external characteristics.



Sample Image Used

COLOR

D E F G H I J Faint Very Light Light

CLARITY

FL	IF	VS ¹⁻²	VS ¹⁻²	SI ¹⁻²	I ¹⁻³
Flawless	Internally Flawless	Very Very Slightly Included	Very Slightly Included	Slightly Included	Included

