



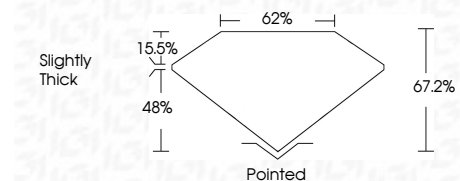
**ELECTRONIC COPY**

LG774618369  
Report verification at igi.org



February 12, 2026  
IGI Report Number **LG774618369**  
Description **LABORATORY GROWN DIAMOND**  
Shape and Cutting Style **SQUARE EMERALD CUT**  
Measurements **5.55 X 5.48 X 3.68 MM**

**GRADING RESULTS**  
Carat Weight **1.00 CARAT**  
Color Grade **D**  
Clarity Grade **VVS 2**



**ADDITIONAL GRADING INFORMATION**  
Polish **EXCELLENT**  
Symmetry **EXCELLENT**  
Fluorescence **NONE**  
Inscription(s) **IGI LG774618369**  
Comments: As Grown - No indication of post-growth treatment.  
This Laboratory Grown Diamond was created by High Pressure High Temperature (HPHT) growth process.  
Type II



February 12, 2026  
IGI Report No LG774618369  
**SQUARE EMERALD CUT**  
Carat Weight **1.00 CARAT**  
Color Grade **D**  
Clarity Grade **VVS 2**  
Depth **48%**  
Table **15.5%**  
Girdle **67.2%**  
Culet **Slightly Thick**  
Polish **Pointed**  
Symmetry **EXCELLENT**  
Fluorescence **EXCELLENT**  
Inscription(s) **NONE**  
IGI LG774618369  
Comments: As Grown - No indication of post-growth treatment.  
This Laboratory Grown Diamond was created by High Pressure High Temperature (HPHT) growth process.  
Type II

**LABORATORY GROWN DIAMOND REPORT**

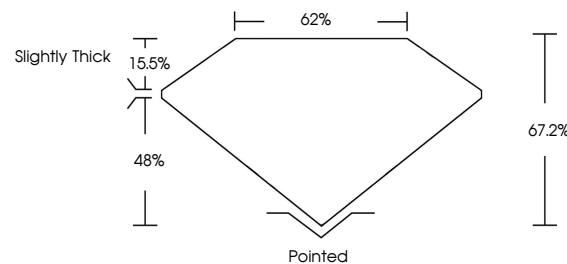
February 12, 2026  
IGI Report Number **LG774618369**  
Description **LABORATORY GROWN DIAMOND**  
Shape and Cutting Style **SQUARE EMERALD CUT**  
Measurements **5.55 X 5.48 X 3.68 MM**

**GRADING RESULTS**  
Carat Weight **1.00 CARAT**  
Color Grade **D**  
Clarity Grade **VVS 2**

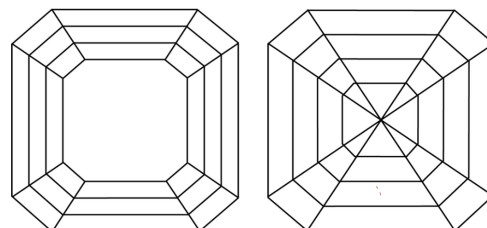
**ADDITIONAL GRADING INFORMATION**  
Polish **EXCELLENT**  
Symmetry **EXCELLENT**  
Fluorescence **NONE**  
Inscription(s) **IGI LG774618369**

Comments: As Grown - No indication of post-growth treatment.  
This Laboratory Grown Diamond was created by High Pressure High Temperature (HPHT) growth process.  
Type II

**PROPORTIONS**

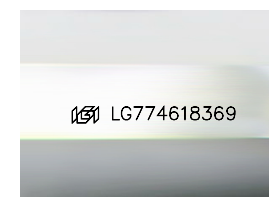


**CLARITY CHARACTERISTICS**



**KEY TO SYMBOLS**

Red symbols indicate internal characteristics.  
Green symbols indicate external characteristics.



Sample Image Used

**COLOR**

D E F G H I J Faint Very Light Light

**CLARITY**

FL	IF	VVS <sup>1-2</sup>	VS <sup>1-2</sup>	SI <sup>1-2</sup>	I <sup>1-3</sup>
Flawless	Internally Flawless	Very Very Slightly Included	Very Slightly Included	Slightly Included	Included

