



**ELECTRONIC COPY**

LG774616180  
Report verification at igi.org



February 27, 2026

IGI Report Number **LG774616180**

Description **LABORATORY GROWN DIAMOND**

Shape and Cutting Style **EMERALD CUT**

Measurements **8.75 X 5.80 X 3.74 MM**

**GRADING RESULTS**

Carat Weight **2.03 CARATS**

Color Grade **FANCY PINK BROWN**

Clarity Grade **VS 1**

February 27, 2026  
IGI Report Number **LG774616180**  
Description **LABORATORY GROWN DIAMOND**  
Shape and Cutting Style **EMERALD CUT**  
Measurements **8.75 X 5.80 X 3.74 MM**

**GRADING RESULTS**

Carat Weight **2.03 CARATS**

Color Grade **FANCY PINK BROWN**

Clarity Grade **VS 1**

**ADDITIONAL GRADING INFORMATION**

Polish **EXCELLENT**

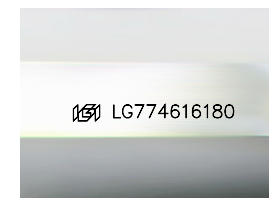
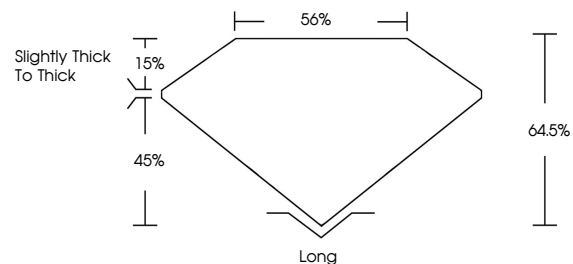
Symmetry **EXCELLENT**

Fluorescence **SLIGHT**

Inscription(s) **IGI LG774616180**

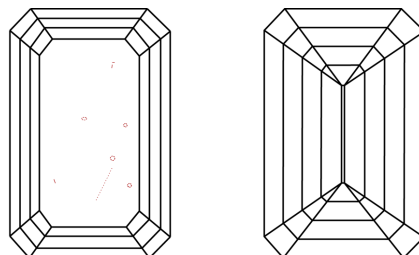
Comments: This Laboratory Grown Diamond was created by Chemical Vapor Deposition (CVD) growth process. Indications of post-growth treatment.

**PROPORTIONS**



Sample Image Used

**CLARITY CHARACTERISTICS**



**KEY TO SYMBOLS**

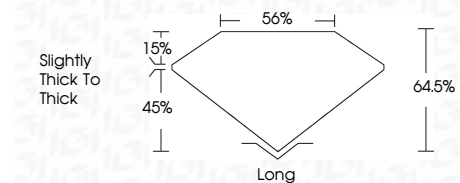
Red symbols indicate internal characteristics.  
Green symbols indicate external characteristics.

**COLOR**

D E F G H I J Faint Very Light Light

**CLARITY**

FL	IF	VS <sup>1-2</sup>	VS <sup>1-2</sup>	SI <sup>1-2</sup>	I <sup>1-3</sup>
Flawless	Internally Flawless	Very Very Slightly Included	Very Slightly Included	Slightly Included	Included



**ADDITIONAL GRADING INFORMATION**

Polish **EXCELLENT**

Symmetry **EXCELLENT**

Fluorescence **SLIGHT**

Inscription(s) **IGI LG774616180**

Comments: This Laboratory Grown Diamond was created by Chemical Vapor Deposition (CVD) growth process. Indications of post-growth treatment.



**IGI**



February 27, 2026	IGI Report No LG774616180	EMERALD CUT	2.03 CARATS	FANCY PINK BROWN	VS 1	64.5%	85%	Slightly thick to thick	Long	EXCELLENT	EXCELLENT	SLIGHT	IGI LG774616180
8.75 X 5.80 X 3.74 MM	Carat Weight	Color Grade	Clarity Grade	Depth	Table	Graile	Culet	Polish	Symmetry	Fluorescence	Inscription(s)		

Comments: This Laboratory Grown Diamond was created by Chemical Vapor Deposition (CVD) growth process. Indications of post-growth treatment.