



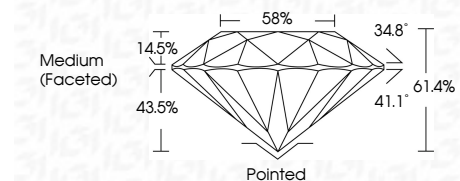
**ELECTRONIC COPY**

LG774611366  
Report verification at igi.org



February 11, 2026  
IGI Report Number **LG774611366**  
Description **LABORATORY GROWN DIAMOND**  
Shape and Cutting Style **ROUND BRILLIANT**  
Measurements **9.83 - 9.86 X 6.05 MM**

**GRADING RESULTS**  
Carat Weight **3.57 CARATS**  
Color Grade **D**  
Clarity Grade **VS 1**  
Cut Grade **IDEAL**



**ADDITIONAL GRADING INFORMATION**  
Polish **EXCELLENT**  
Symmetry **EXCELLENT**  
Fluorescence **NONE**  
Inscription(s) **IGI LG774611366**  
Comments: HEARTS & ARROWS  
This Laboratory Grown Diamond was created by Chemical Vapor Deposition (CVD) growth process. Type IIa

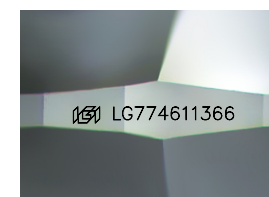


February 11, 2026  
IGI Report No LG774611366  
**ROUND BRILLIANT**  
9.83 - 9.86 X 6.05 MM  
3.57 CARATS  
D  
VS 1  
IDEAL  
61.4%  
58%  
Medium (Faceted)

Culet  
Polish  
Symmetry  
Fluorescence  
Inscriptions(s)

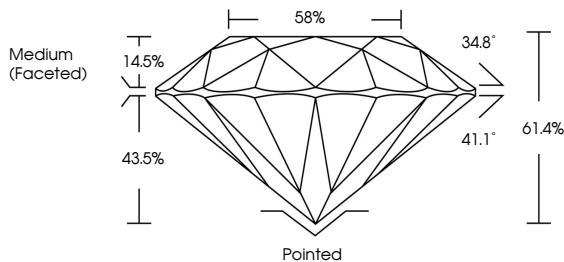
Pointed  
EXCELLENT  
EXCELLENT  
NONE  
IGI LG774611366

Comments:  
Hearts & Arrows  
This Laboratory Grown Diamond was  
created by Chemical Vapor Deposition  
(CVD) growth process.  
Type IIa

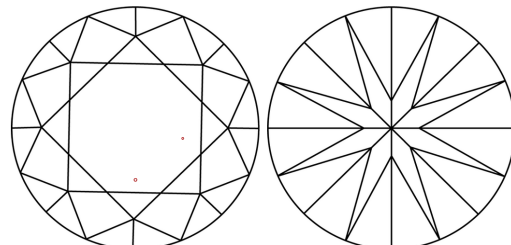


Sample Image Used

**PROPORTIONS**



**CLARITY CHARACTERISTICS**



**KEY TO SYMBOLS**  
Red symbols indicate internal characteristics.  
Green symbols indicate external characteristics.



**COLOR**

D	E	F	G	H	I	J	Faint	Very Light	Light
---	---	---	---	---	---	---	-------	------------	-------

**CLARITY**

FL	IF	VS <sup>1-2</sup>	VS <sup>1-2</sup>	SI <sup>1-2</sup>	I <sup>1-3</sup>
Flawless	Internally Flawless	Very Very Slightly Included	Very Slightly Included	Slightly Included	Included

