



ELECTRONIC COPY

LABORATORY GROWN DIAMOND REPORT

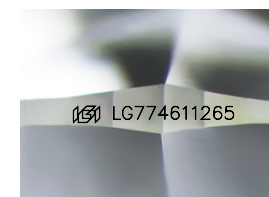
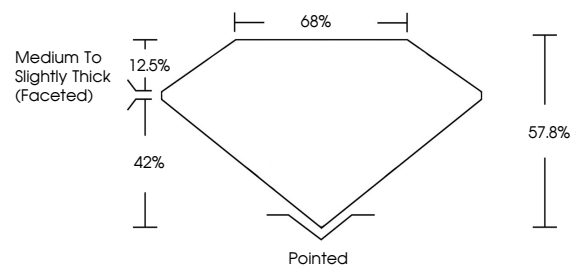
February 19, 2026
 IGI Report Number **LG774611265**
 Description **LABORATORY GROWN DIAMOND**
 Shape and Cutting Style **ROUND MODIFIED BRILLIANT**
 Measurements **6.56 - 6.56 X 3.79 MM**
GRADING RESULTS
 Carat Weight **1.10 CARAT**
 Color Grade **FANCY VIVID PINK**
 Clarity Grade **VS 1**

ADDITIONAL GRADING INFORMATION

Polish **VERY GOOD**
 Symmetry **VERY GOOD**
 Fluorescence **STRONG**
 Inscription(s) **LG774611265**

Comments: This Laboratory Grown Diamond was created by Chemical Vapor Deposition (CVD) growth process. Indications of post-growth treatment.

PROPORTIONS



Sample Image Used

COLOR

D	E	F	G	H	I	J	Faint	Very Light	Light
---	---	---	---	---	---	---	-------	------------	-------

CLARITY

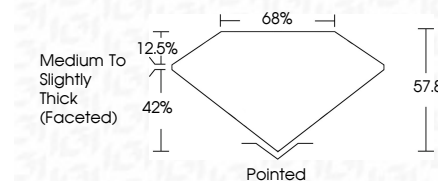
FL	IF	VS ¹⁻²	VS ¹⁻²	SI ¹⁻²	I ¹⁻³
Flawless	Internally Flawless	Very Very Slightly Included	Very Slightly Included	Slightly Included	Included



February 19, 2026
 IGI Report Number **LG774611265**
 Description **LABORATORY GROWN DIAMOND**
 Shape and Cutting Style **ROUND MODIFIED BRILLIANT**
 Measurements **6.56 - 6.56 X 3.79 MM**
GRADING RESULTS
 Carat Weight **1.10 CARAT**
 Color Grade **FANCY VIVID PINK**
 Clarity Grade **VS 1**

ADDITIONAL GRADING INFORMATION

Polish **VERY GOOD**
 Symmetry **VERY GOOD**
 Fluorescence **STRONG**
 Inscription(s) **LG774611265**
 Comments: This Laboratory Grown Diamond was created by Chemical Vapor Deposition (CVD) growth process. Indications of post-growth treatment.



February 19, 2026
 IGI Report No LG774611265
ROUND MODIFIED BRILLIANT
 6.56 - 6.56 X 3.79 MM
 Carat Weight **1.10 CARAT**
 Color Grade **FANCY VIVID PINK**
 Clarity Grade **VS 1**
 Depth **57.8%**
 Table **68%**
 Girdle **Medium to Slightly Thick (Faceted)**
 Culet **Pointed**
 Polish **VERY GOOD**
 Symmetry **VERY GOOD**
 Fluorescence **STRONG**
 Inscription(s) **LG774611265**

Comments: This Laboratory Grown Diamond was created by Chemical Vapor Deposition (CVD) growth process. Indications of post-growth treatment.