



ELECTRONIC COPY

LG774611233
Report verification at igi.org



February 16, 2026
IGI Report Number **LG774611233**
Description **LABORATORY GROWN DIAMOND**
Shape and Cutting Style **PEAR MIXED CUT**
Measurements **13.87 X 6.54 X 4.19 MM**
GRADING RESULTS
Carat Weight **2.24 CARATS**
Color Grade **FANCY VIVID GREEN**
Clarity Grade **VS 1**

February 16, 2026
IGI Report Number **LG774611233**
Description **LABORATORY GROWN DIAMOND**
Shape and Cutting Style **PEAR MIXED CUT**
Measurements **13.87 X 6.54 X 4.19 MM**

GRADING RESULTS

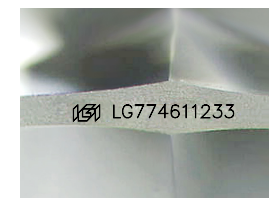
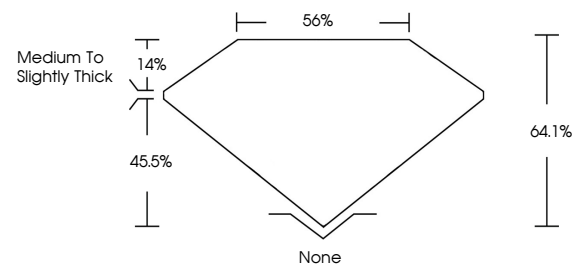
Carat Weight **2.24 CARATS**
Color Grade **FANCY VIVID GREEN**
Clarity Grade **VS 1**

ADDITIONAL GRADING INFORMATION

Polish **EXCELLENT**
Symmetry **EXCELLENT**
Fluorescence **NONE**
Inscription(s) **IGI LG774611233**

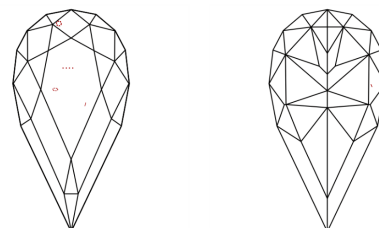
Comments: This Laboratory Grown Diamond was created by Chemical Vapor Deposition (CVD) growth process.
Indications of post-growth treatment.

PROPORTIONS



Sample Image Used

CLARITY CHARACTERISTICS



KEY TO SYMBOLS

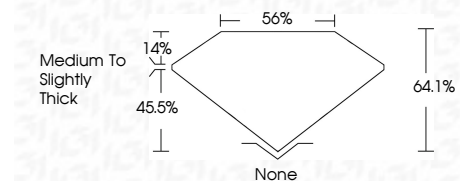
Red symbols indicate internal characteristics.
Green symbols indicate external characteristics.

COLOR

D E F G H I J Faint Very Light Light

CLARITY

FL	IF	VS ¹⁻²	VS ¹⁻²	SI ¹⁻²	I ¹⁻³
Flawless	Internally Flawless	Very Very Slightly Included	Very Slightly Included	Slightly Included	Included



ADDITIONAL GRADING INFORMATION

Polish **EXCELLENT**
Symmetry **EXCELLENT**
Fluorescence **NONE**
Inscription(s) **IGI LG774611233**
Comments: This Laboratory Grown Diamond was created by Chemical Vapor Deposition (CVD) growth process.
Indications of post-growth treatment.



February 16, 2026
IGI Report No LG774611233
PEAR MIXED CUT
13.87 X 6.54 X 4.19 MM
2.24 CARATS
FANCY VIVID GREEN
VS 1
64.1%
45.5%
None
Medium to Slightly Thick
None
EXCELLENT
EXCELLENT
NONE
IGI LG774611233
Comments: This Laboratory Grown Diamond was created by Chemical Vapor Deposition (CVD) growth process.
Indications of post-growth treatment.