



February 19, 2026

IGI Report Number **LG774611183**

**ROUND BRILLIANT
LABORATORY GROWN DIAMOND
5.96 - 5.99 X 3.55 MM**

Carat Weight	0.77 CARAT
Color Grade	Y-Z
Clarity Grade	VVS 2
Cut Grade	EXCELLENT
Polish	EXCELLENT
Symmetry	EXCELLENT
Fluorescence	VERY SLIGHT
Inscription(s)	IGI LG774611183

Comments: This Laboratory Grown Diamond was created by Chemical Vapor Deposition (CVD) growth process. Type IIa

LABORATORY GROWN DIAMOND REPORT

February 19, 2026

IGI Report Number

LG774611183

Description

LABORATORY GROWN DIAMOND

Shape and Cutting Style

ROUND BRILLIANT

Measurements

5.96 - 5.99 X 3.55 MM

GRADING RESULTS

Carat Weight

0.77 CARAT

Color Grade

Y-Z

Clarity Grade

VVS 2

Cut Grade

EXCELLENT

ADDITIONAL GRADING INFORMATION

Polish

VERY GOOD

Symmetry

EXCELLENT

Fluorescence

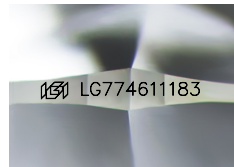
VERY SLIGHT

Inscription(s)

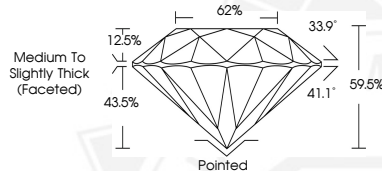
IGI LG774611183

Comments: This Laboratory Grown Diamond was created by Chemical Vapor Deposition (CVD) growth process.

Type IIa



Sample Image Used



February 19, 2026

IGI Report Number **LG774611183**

**ROUND BRILLIANT
LABORATORY GROWN DIAMOND
5.96 - 5.99 X 3.55 MM**

Carat Weight	0.77 CARAT
Color Grade	Y-Z
Clarity Grade	VVS 2
Cut Grade	EXCELLENT
Polish	EXCELLENT
Symmetry	EXCELLENT
Fluorescence	VERY SLIGHT
Inscription(s)	IGI LG774611183

Comments: This Laboratory Grown Diamond was created by Chemical Vapor Deposition (CVD) growth process. Type IIa



THIS DOCUMENT WAS PRODUCED WITH THE FOLLOWING SECURITY MEASURES: SPECIAL DOCUMENT PAPER, INK SCREENS, WATERMARK, BACKGROUND DESIGNS, HOLOGRAM AND OTHER SECURITY FEATURES NOT LISTED AND DO EXCEED DOCUMENT SECURITY INDUSTRY GUIDELINES.