



**INTERNATIONAL  
GEMOLOGICAL  
INSTITUTE**

**ELECTRONIC COPY**

**LABORATORY GROWN DIAMOND REPORT**

February 16, 2026  
 IGI Report Number **LG774611178**  
 Description **LABORATORY GROWN DIAMOND**  
 Shape and Cutting Style **ROUND BRILLIANT**  
 Measurements **5.92 - 5.97 X 3.60 MM**

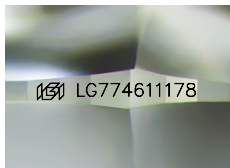
**GRADING RESULTS**

Carat Weight **0.79 CARAT**  
 Color Grade **LIGHT BROWNISH YELLOW**  
 Clarity Grade **VS 1**  
 Cut Grade **EXCELLENT**

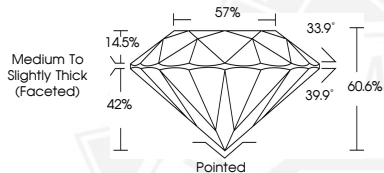
**ADDITIONAL GRADING INFORMATION**

Polish **VERY GOOD**  
 Symmetry **VERY GOOD**  
 Fluorescence **SLIGHT**  
 Inscription(s) **IGI LG774611178**

Comments: This Laboratory Grown Diamond was created by Chemical Vapor Deposition (CVD) growth process. Indications of post-growth treatment.



Sample Image Used



February 16, 2026  
 IGI Report Number **LG774611178**  
 ROUND BRILLIANT  
 LABORATORY GROWN DIAMOND  
 5.92 - 5.97 X 3.60 MM  
 Carat Weight **0.79 CARAT**  
 Color Grade **LIGHT BROWNISH YELLOW**  
 Clarity Grade **VS 1**  
 Cut Grade **EXCELLENT**  
 Polish **VERY GOOD**  
 Symmetry **VERY GOOD**  
 Fluorescence **SLIGHT**  
 Inscription(s) **IGI LG774611178**

Comments: This Laboratory Grown Diamond was created by Chemical Vapor Deposition (CVD) growth process. Indications of post-growth treatment.



February 16, 2026  
 IGI Report Number **LG774611178**  
 ROUND BRILLIANT  
 LABORATORY GROWN DIAMOND  
 5.92 - 5.97 X 3.60 MM  
 Carat Weight **0.79 CARAT**  
 Color Grade **LIGHT BROWNISH YELLOW**  
 Clarity Grade **VS 1**  
 Cut Grade **EXCELLENT**  
 Polish **VERY GOOD**  
 Symmetry **VERY GOOD**  
 Fluorescence **SLIGHT**  
 Inscription(s) **IGI LG774611178**

Comments: This Laboratory Grown Diamond was created by Chemical Vapor Deposition (CVD) growth process. Indications of post-growth treatment.

THIS DOCUMENT WAS PRODUCED WITH THE FOLLOWING SECURITY MEASURES: SPECIAL DOCUMENT PAPER, INK SCREENS, WATERMARK, BACKGROUND DESIGNS, HOLOGRAM AND OTHER SECURITY FEATURES NOT LISTED AND DO EXCEED DOCUMENT SECURITY INDUSTRY GUIDELINES.

For terms & conditions and to verify this report, please visit [www.igi.org](http://www.igi.org)