



LABORATORY GROWN DIAMOND REPORT

February 21, 2026
 IGI Report Number **LG774611177**
 Description **LABORATORY GROWN DIAMOND**
 Shape and Cutting Style **ROUND BRILLIANT**
 Measurements **5.89 - 5.92 X 3.64 MM**

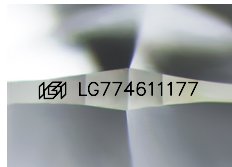
GRADING RESULTS

Carat Weight **0.79 CARAT**
 Color Grade **Y-Z**
 Clarity Grade **VVS 2**
 Cut Grade **GOOD**

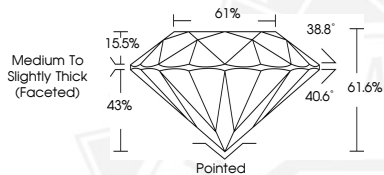
ADDITIONAL GRADING INFORMATION

Polish **VERY GOOD**
 Symmetry **EXCELLENT**
 Fluorescence **VERY SLIGHT**
 Inscription(s) **IGI LG774611177**

Comments: This Laboratory Grown Diamond was created by
 Chemical Vapor Deposition (CVD) growth process.
 Type IIa



Sample Image Used



February 21, 2026
 IGI Report Number **LG774611177**
ROUND BRILLIANT
LABORATORY GROWN DIAMOND
5.89 - 5.92 X 3.64 MM

Carat Weight	0.79 CARAT
Color Grade	Y-Z
Clarity Grade	VVS 2
Cut Grade	GOOD
Polish	VERY GOOD
Symmetry	EXCELLENT
Fluorescence	VERY SLIGHT
Inscription(s)	IGI LG774611177

Comments: This Laboratory Grown Diamond was created by
 Chemical Vapor Deposition (CVD)
 growth process. Type IIa



February 21, 2026
 IGI Report Number **LG774611177**
ROUND BRILLIANT
LABORATORY GROWN DIAMOND
5.89 - 5.92 X 3.64 MM

Carat Weight	0.79 CARAT
Color Grade	Y-Z
Clarity Grade	VVS 2
Cut Grade	GOOD
Polish	VERY GOOD
Symmetry	EXCELLENT
Fluorescence	VERY SLIGHT
Inscription(s)	IGI LG774611177

Comments: This Laboratory Grown Diamond was created by
 Chemical Vapor Deposition (CVD)
 growth process. Type IIa

THIS DOCUMENT WAS PRODUCED WITH THE FOLLOWING SECURITY MEASURES: SPECIAL DOCUMENT PAPER, INK SCREENS, WATERMARK, BACKGROUND DESIGNS, HOLOGRAM AND OTHER SECURITY FEATURES NOT LISTED AND DO EXCEED DOCUMENT SECURITY INDUSTRY GUIDELINES.