



ELECTRONIC COPY

LG774610105
Report verification at igi.org



February 10, 2026

IGI Report Number **LG774610105**

Description **LABORATORY GROWN DIAMOND**

Shape and Cutting Style **PRINCESS CUT**

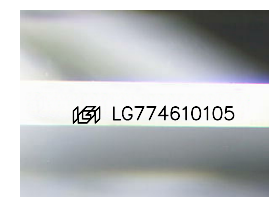
Measurements **9.01 X 8.83 X 6.27 MM**

GRADING RESULTS

Carat Weight **4.02 CARATS**

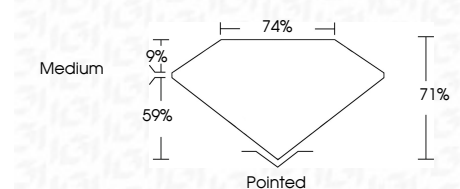
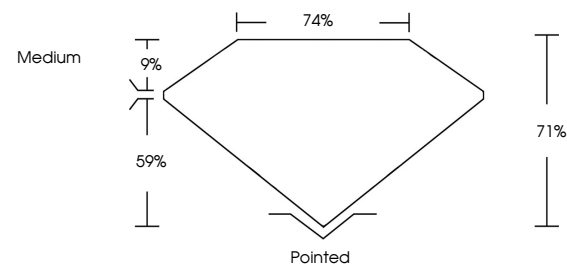
Color Grade **F**

Clarity Grade **VVS 2**

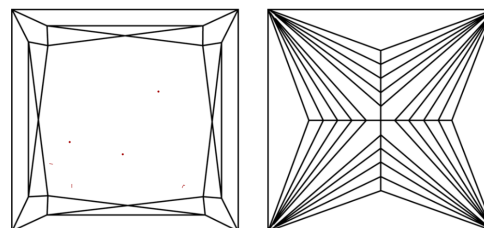


Sample Image Used

PROPORTIONS



CLARITY CHARACTERISTICS



KEY TO SYMBOLS

Red symbols indicate internal characteristics.
Green symbols indicate external characteristics.

COLOR

D E F G H I J Faint Very Light Light

CLARITY

FL	IF	VVS ¹⁻²	VS ¹⁻²	SI ¹⁻²	I ¹⁻³
Flawless	Internally Flawless	Very Very Slightly Included	Very Slightly Included	Slightly Included	Included

ADDITIONAL GRADING INFORMATION

Polish **EXCELLENT**

Symmetry **VERY GOOD**

Fluorescence **NONE**

Inscription(s) **IGI LG774610105**

Comments: This Laboratory Grown Diamond was created by Chemical Vapor Deposition (CVD) growth process. Type IIa



IGI



February 10, 2026
IGI Report No LG774610105
PRINCESS CUT
9.01 X 8.83 X 6.27 MM
4.02 CARATS
F
VVS 2
71%
74%
Medium
Pointed
EXCELLENT
VERY GOOD
NONE
IGI LG774610105
Comments: This Laboratory Grown Diamond was created by Chemical Vapor Deposition (CVD) growth process. Type IIa