



**ELECTRONIC COPY**

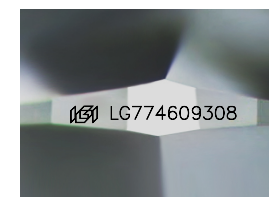
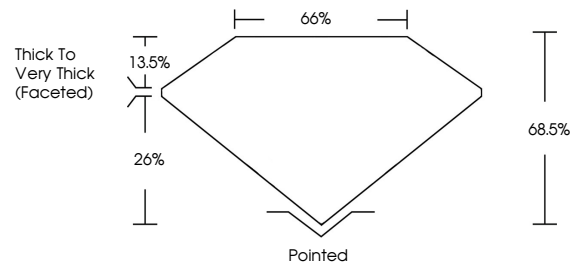
LG774609308  
Report verification at igi.org



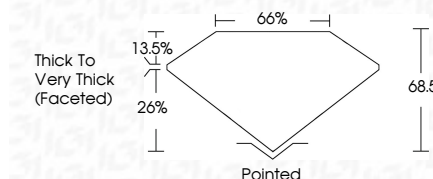
February 18, 2026  
IGI Report Number **LG774609308**  
Description **LABORATORY GROWN DIAMOND**  
Shape and Cutting Style **SQUARE CUSHION MODIFIED BRILLIANT**  
Measurements **6.24 X 6.19 X 4.24 MM**  
**GRADING RESULTS**  
Carat Weight **1.60 CARAT**  
Color Grade **FANCY VIVID PINK**  
Clarity Grade **VS 1**

February 18, 2026  
IGI Report Number **LG774609308**  
Description **LABORATORY GROWN DIAMOND**  
Shape and Cutting Style **SQUARE CUSHION MODIFIED BRILLIANT**  
Measurements **6.24 X 6.19 X 4.24 MM**  
**GRADING RESULTS**  
Carat Weight **1.60 CARAT**  
Color Grade **FANCY VIVID PINK**  
Clarity Grade **VS 1**

**PROPORTIONS**



Sample Image Used



**ADDITIONAL GRADING INFORMATION**

Polish **EXCELLENT**  
Symmetry **EXCELLENT**  
Fluorescence **STRONG**  
Inscription(s) **IGI LG774609308**

Comments: This Laboratory Grown Diamond was created by High Pressure High Temperature (HPHT) growth process. Indications of post-growth treatment.

**COLOR**

D E F G H I J Faint Very Light Light

**CLARITY**

FL	IF	VS <sup>1-2</sup>	VS <sup>1-2</sup>	SI <sup>1-2</sup>	I <sup>1-3</sup>
Flawless	Internally Flawless	Very Very Slightly Included	Very Slightly Included	Slightly Included	Included

**ADDITIONAL GRADING INFORMATION**

Polish **EXCELLENT**  
Symmetry **EXCELLENT**  
Fluorescence **STRONG**  
Inscription(s) **IGI LG774609308**

Comments: This Laboratory Grown Diamond was created by High Pressure High Temperature (HPHT) growth process. Indications of post-growth treatment.



February 18, 2026  
IGI Report No **LG774609308**  
**SQUARE CUSHION MODIFIED BRILLIANT**  
**6.24 X 6.19 X 4.24 MM**  
Carat Weight **1.60 CARAT**  
Color Grade **FANCY VIVID PINK**  
Clarity Grade **VS 1**  
Depth **68.5%**  
Table **66%**  
Girdle **Thick to Very Thick (Faceted)**  
Culet **Pointed**  
Polish **EXCELLENT**  
Symmetry **EXCELLENT**  
Fluorescence **STRONG**  
Inscription(s) **IGI LG774609308**

Comments: This Laboratory Grown Diamond was created by High Pressure High Temperature (HPHT) growth process. Indications of post-growth treatment.