



ELECTRONIC COPY

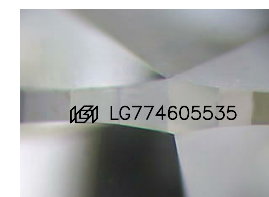
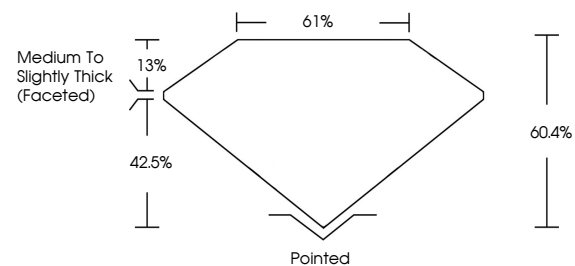
LG774605535
Report verification at igi.org



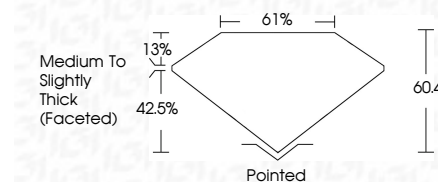
February 12, 2026
IGI Report Number **LG774605535**
Description **LABORATORY GROWN DIAMOND**
Shape and Cutting Style **OVAL BRILLIANT**
Measurements **17.31 X 11.82 X 7.14 MM**
GRADING RESULTS
Carat Weight **9.55 CARATS**
Color Grade **F**
Clarity Grade **VVS 2**

February 12, 2026
IGI Report Number **LG774605535**
Description **LABORATORY GROWN DIAMOND**
Shape and Cutting Style **OVAL BRILLIANT**
Measurements **17.31 X 11.82 X 7.14 MM**
GRADING RESULTS
Carat Weight **9.55 CARATS**
Color Grade **F**
Clarity Grade **VVS 2**

PROPORTIONS



Sample Image Used



ADDITIONAL GRADING INFORMATION

Polish **EXCELLENT**
Symmetry **EXCELLENT**
Fluorescence **NONE**
Inscription(s) **IGI LG774605535**

Comments: This Laboratory Grown Diamond was created by Chemical Vapor Deposition (CVD) growth process. Type IIa

ADDITIONAL GRADING INFORMATION

Polish **EXCELLENT**
Symmetry **EXCELLENT**
Fluorescence **NONE**
Inscription(s) **IGI LG774605535**
Comments: This Laboratory Grown Diamond was created by Chemical Vapor Deposition (CVD) growth process. Type IIa

COLOR

D E F G H I J Faint Very Light Light

CLARITY

FL	IF	VS ¹⁻²	VS ¹⁻²	SI ¹⁻²	I ¹⁻³
Flawless	Internally Flawless	Very Very Slightly Included	Very Slightly Included	Slightly Included	Included



IGI



February 12, 2026
IGI Report No **LG774605535**
OVAL BRILLIANT
17.31 X 11.82 X 7.14 MM
Carat Weight **9.55 CARATS**
Color Grade **F**
Clarity Grade **VVS 2**
Table **61%**
Depth **13%**
Girdle **Medium to Slightly Thick (Faceted)**
Culet **Pointed**
Polish **EXCELLENT**
Symmetry **EXCELLENT**
Fluorescence **NONE**
Inscription(s) **IGI LG774605535**
Comments: This Laboratory Grown Diamond was created by Chemical Vapor Deposition (CVD) growth process. Type IIa