



**ELECTRONIC COPY**

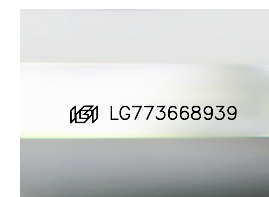
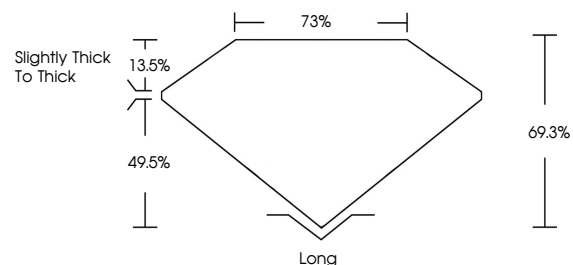
LG773668939  
Report verification at [igi.org](http://igi.org)



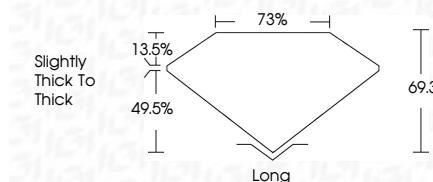
February 17, 2026  
IGI Report Number **LG773668939**  
Description **LABORATORY GROWN DIAMOND**  
Shape and Cutting Style **EMERALD CUT**  
Measurements **7.59 X 5.15 X 3.57 MM**  
**GRADING RESULTS**  
Carat Weight **1.41 CARAT**  
Color Grade **FANCY INTENSE PINK**  
Clarity Grade **VS 1**

February 17, 2026  
IGI Report Number **LG773668939**  
Description **LABORATORY GROWN DIAMOND**  
Shape and Cutting Style **EMERALD CUT**  
Measurements **7.59 X 5.15 X 3.57 MM**  
**GRADING RESULTS**  
Carat Weight **1.41 CARAT**  
Color Grade **FANCY INTENSE PINK**  
Clarity Grade **VS 1**

**PROPORTIONS**



Sample Image Used



**ADDITIONAL GRADING INFORMATION**

Polish **EXCELLENT**  
Symmetry **EXCELLENT**  
Fluorescence **SLIGHT**  
Inscription(s) **IGI LG773668939**

Comments: This Laboratory Grown Diamond was created by Chemical Vapor Deposition (CVD) growth process. Indications of post-growth treatment.

**ADDITIONAL GRADING INFORMATION**

Polish **EXCELLENT**  
Symmetry **EXCELLENT**  
Fluorescence **SLIGHT**  
Inscription(s) **IGI LG773668939**

Comments: This Laboratory Grown Diamond was created by Chemical Vapor Deposition (CVD) growth process. Indications of post-growth treatment.

**COLOR**

D E F G H I J Faint Very Light Light

**CLARITY**

FL	IF	VS <sup>1-2</sup>	VS <sup>1-2</sup>	SI <sup>1-2</sup>	I <sup>1-3</sup>
Flawless	Internally Flawless	Very Very Slightly Included	Very Slightly Included	Slightly Included	Included



**IGI**



February 17, 2026  
IGI Report No **LG773668939**  
**EMERALD CUT**  
**1.41 CARAT**  
Carat Weight **FANCY INTENSE PINK**  
Color Grade **VS 1**  
Depth **69.3%**  
Table **73%**  
Girdle **Slightly thick to thick**  
Culet **Long**  
Polish **EXCELLENT**  
Symmetry **EXCELLENT**  
Fluorescence **SLIGHT**  
Inscription(s) **IGI LG773668939**  
Comments: This Laboratory Grown Diamond was created by Chemical Vapor Deposition (CVD) growth process. Indications of post-growth treatment.