



ELECTRONIC COPY

LG773664128
Report verification at igi.org



February 13, 2026
IGI Report Number LG773664128
Description LABORATORY GROWN DIAMOND
Shape and Cutting Style SQUARE CUSHION MODIFIED BRILLIANT
Measurements 7.30 X 7.14 X 4.86 MM
GRADING RESULTS
Carat Weight 1.93 CARAT
Color Grade E
Clarity Grade VVS 2

February 13, 2026
IGI Report Number LG773664128
Description LABORATORY GROWN DIAMOND
Shape and Cutting Style SQUARE CUSHION MODIFIED BRILLIANT
Measurements 7.30 X 7.14 X 4.86 MM

GRADING RESULTS

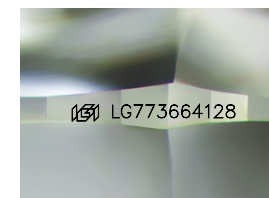
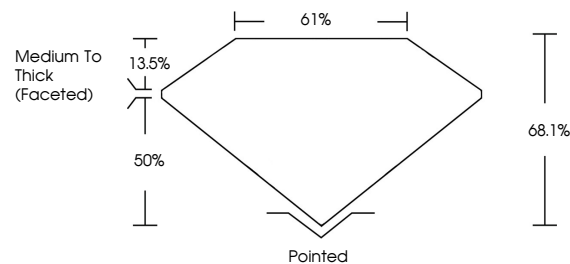
Carat Weight 1.93 CARAT
Color Grade E
Clarity Grade VVS 2

ADDITIONAL GRADING INFORMATION

Polish EXCELLENT
Symmetry EXCELLENT
Fluorescence NONE
Inscription(s) LG773664128

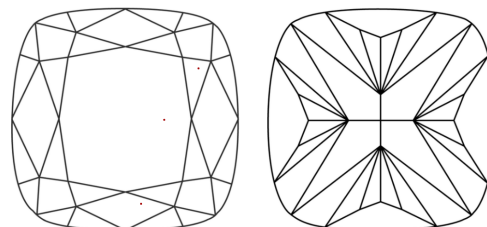
Comments: This Laboratory Grown Diamond was created by Chemical Vapor Deposition (CVD) growth process. Type IIa

PROPORTIONS



Sample Image Used

CLARITY CHARACTERISTICS



KEY TO SYMBOLS

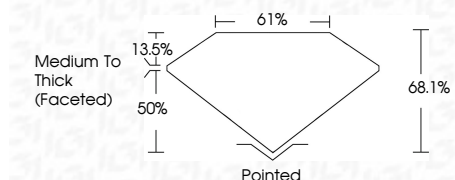
Red symbols indicate internal characteristics.
Green symbols indicate external characteristics.

COLOR

D E F G H I J Faint Very Light Light

CLARITY

FL IF VVS 1-2 VS 1-2 SI 1-2 I 1-3
Flawless Internally Flawless Very Very Slightly Included Very Slightly Included Slightly Included Included



ADDITIONAL GRADING INFORMATION

Polish EXCELLENT
Symmetry EXCELLENT
Fluorescence NONE
Inscription(s) LG773664128
Comments: This Laboratory Grown Diamond was created by Chemical Vapor Deposition (CVD) growth process. Type IIa



February 13, 2026
IGI Report No LG773664128
SQUARE CUSHION MODIFIED BRILLIANT
1.93 CARAT E
7.30 X 7.14 X 4.86 MM
VVS 2 68.1% 61%
Medium To Thick (Faceted)
Pointed
EXCELLENT EXCELLENT NONE
EXCELLENT EXCELLENT NONE
None
Inscription(s) LG773664128
Comments: This Laboratory Grown Diamond was created by Chemical Vapor Deposition (CVD) growth process. Type IIa