



ELECTRONIC COPY

LG773663640
Report verification at igi.org



February 13, 2026
IGI Report Number **LG773663640**
Description **LABORATORY GROWN DIAMOND**
Shape and Cutting Style **HEXAGONAL MODIFIED STEP CUT**
Measurements **10.19 X 5.48 X 3.34 MM**
GRADING RESULTS
Carat Weight **1.41 CARAT**
Color Grade **D**
Clarity Grade **VVS 2**

February 13, 2026
IGI Report Number **LG773663640**
Description **LABORATORY GROWN DIAMOND**
Shape and Cutting Style **HEXAGONAL MODIFIED STEP CUT**
Measurements **10.19 X 5.48 X 3.34 MM**

GRADING RESULTS

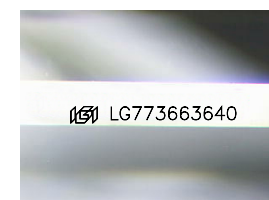
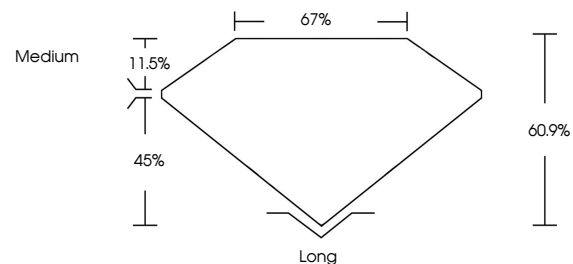
Carat Weight **1.41 CARAT**
Color Grade **D**
Clarity Grade **VVS 2**

ADDITIONAL GRADING INFORMATION

Polish **EXCELLENT**
Symmetry **VERY GOOD**
Fluorescence **NONE**
Inscription(s) **IGI LG773663640**

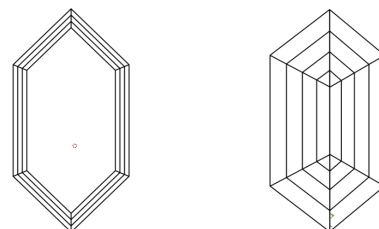
Comments: This Laboratory Grown Diamond was created by Chemical Vapor Deposition (CVD) growth process.
Type IIa

PROPORTIONS



Sample Image Used

CLARITY CHARACTERISTICS



KEY TO SYMBOLS

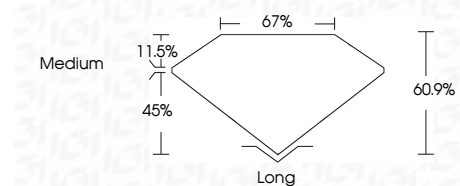
Red symbols indicate internal characteristics.
Green symbols indicate external characteristics.

COLOR

D E F G H I J Faint Very Light Light

CLARITY

FL	IF	VVS ¹⁻²	VS ¹⁻²	SI ¹⁻²	I ¹⁻³
Flawless	Internally Flawless	Very Very Slightly Included	Very Slightly Included	Slightly Included	Included



ADDITIONAL GRADING INFORMATION

Polish **EXCELLENT**
Symmetry **VERY GOOD**
Fluorescence **NONE**
Inscription(s) **IGI LG773663640**
Comments: This Laboratory Grown Diamond was created by Chemical Vapor Deposition (CVD) growth process.
Type IIa



February 13, 2026
IGI Report No LG773663640
HEXAGONAL MODIFIED STEP CUT
10.19 X 5.48 X 3.34 MM
1.41 CARAT
D
VVS 2
60.9%
67%
Medium
Long
EXCELLENT
VERY GOOD
NONE
IGI LG773663640
Comments: This Laboratory Grown Diamond was created by Chemical Vapor Deposition (CVD) growth process.
Type IIa