



ELECTRONIC COPY

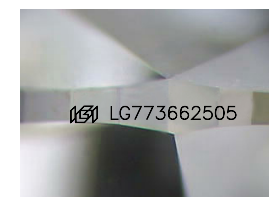
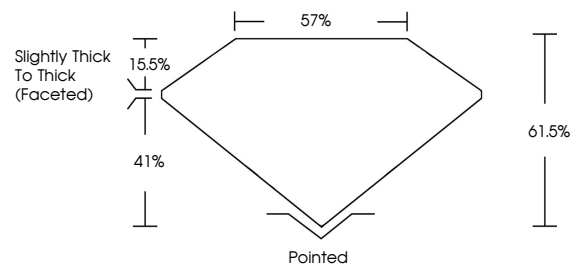
LG773662505
Report verification at igi.org



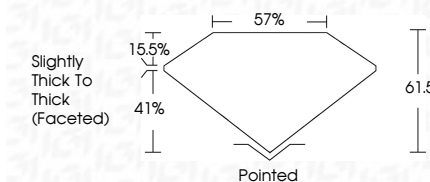
February 9, 2026
IGI Report Number **LG773662505**
Description **LABORATORY GROWN DIAMOND**
Shape and Cutting Style **OVAL BRILLIANT**
Measurements **12.19 X 8.42 X 5.18 MM**
GRADING RESULTS
Carat Weight **3.41 CARATS**
Color Grade **D**
Clarity Grade **VS 1**

February 9, 2026
IGI Report Number **LG773662505**
Description **LABORATORY GROWN DIAMOND**
Shape and Cutting Style **OVAL BRILLIANT**
Measurements **12.19 X 8.42 X 5.18 MM**
GRADING RESULTS
Carat Weight **3.41 CARATS**
Color Grade **D**
Clarity Grade **VS 1**

PROPORTIONS



Sample Image Used



ADDITIONAL GRADING INFORMATION

Polish **EXCELLENT**
Symmetry **EXCELLENT**
Fluorescence **NONE**
Inscription(s) **IGI LG773662505**

Comments: This Laboratory Grown Diamond was created by Chemical Vapor Deposition (CVD) growth process.
Type IIa

ADDITIONAL GRADING INFORMATION

Polish **EXCELLENT**
Symmetry **EXCELLENT**
Fluorescence **NONE**
Inscription(s) **IGI LG773662505**
Comments: This Laboratory Grown Diamond was created by Chemical Vapor Deposition (CVD) growth process.
Type IIa

COLOR

D E F G H I J Faint Very Light Light

CLARITY

FL	IF	VS ¹⁻²	VS ¹⁻²	SI ¹⁻²	I ¹⁻³
Flawless	Internally Flawless	Very Very Slightly Included	Very Slightly Included	Slightly Included	Included



IGI



February 9, 2026
IGI Report No LG773662505
OVAL BRILLIANT
12.19 X 8.42 X 5.18 MM
3.41 CARATS
D
Color Grade
VS 1
Depth 61.5%
Table 57%
Girdle Slightly Thick To Thick (Faceted)
Culet Pointed
Polish EXCELLENT
Symmetry EXCELLENT
Fluorescence NONE
Inscription(s) IGI LG773662505
Comments: This Laboratory Grown Diamond was created by Chemical Vapor Deposition (CVD) growth process.
Type IIa