



ELECTRONIC COPY

LG773661702
Report verification at igi.org



February 12, 2026

IGI Report Number **LG773661702**

Description **LABORATORY GROWN DIAMOND**

Shape and Cutting Style **ROUND BRILLIANT**

Measurements **7.20 - 7.25 X 4.46 MM**

GRADING RESULTS

Carat Weight **1.44 CARAT**

Color Grade **E**

Clarity Grade **VVS 2**

Cut Grade **EXCELLENT**

February 12, 2026

IGI Report Number **LG773661702**

Description **LABORATORY GROWN DIAMOND**

Shape and Cutting Style **ROUND BRILLIANT**

Measurements **7.20 - 7.25 X 4.46 MM**

GRADING RESULTS

Carat Weight **1.44 CARAT**

Color Grade **E**

Clarity Grade **VVS 2**

Cut Grade **EXCELLENT**

ADDITIONAL GRADING INFORMATION

Polish **EXCELLENT**

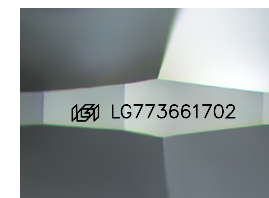
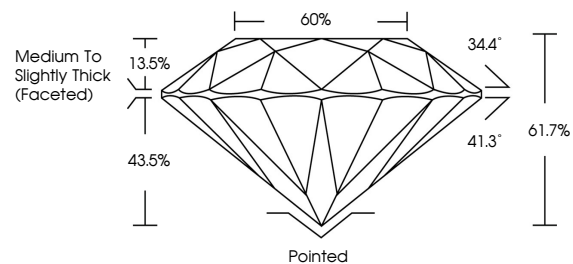
Symmetry **EXCELLENT**

Fluorescence **NONE**

Inscription(s) **IGI LG773661702**

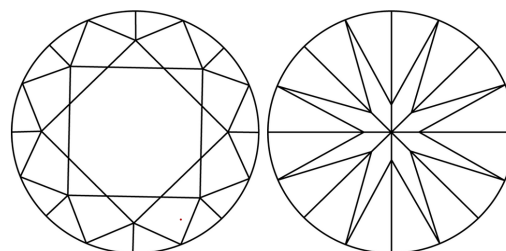
Comments: This Laboratory Grown Diamond was created by Chemical Vapor Deposition (CVD) growth process.
Type IIa

PROPORTIONS



Sample Image Used

CLARITY CHARACTERISTICS



KEY TO SYMBOLS

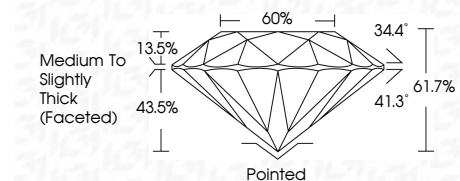
Red symbols indicate internal characteristics.
Green symbols indicate external characteristics.

COLOR

D E F G H I J Faint Very Light Light

CLARITY

| FL | IF | VVS ¹⁻² | VS ¹⁻² | SI ¹⁻² | I ¹⁻³ |
|----------|---------------------|-----------------------------|------------------------|-------------------|------------------|
| Flawless | Internally Flawless | Very Very Slightly Included | Very Slightly Included | Slightly Included | Included |



ADDITIONAL GRADING INFORMATION

Polish **EXCELLENT**

Symmetry **EXCELLENT**

Fluorescence **NONE**

Inscription(s) **IGI LG773661702**

Comments: This Laboratory Grown Diamond was created by Chemical Vapor Deposition (CVD) growth process.
Type IIa



IGI



| | | | | | | | | | | | |
|-------------------------|---------------------------|-----------------|-----------------------|---------------|-----------|--------|-----------|--------------|----------------|--|-----------------|
| February 12, 2026 | IGI Report No LG773661702 | ROUND BRILLIANT | 7.20 - 7.25 X 4.46 MM | 1.44 CARAT | E | VVS 2 | EXCELLENT | EXCELLENT | EXCELLENT | NONE | IGI LG773661702 |
| Shape and Cutting Style | Measurements | Carat Weight | Color Grade | Clarity Grade | Cut Grade | Polish | Symmetry | Fluorescence | Inscription(s) | Comments: This Laboratory Grown Diamond was created by Chemical Vapor Deposition (CVD) growth process. Type IIa | |