



ELECTRONIC COPY

LG773660105
Report verification at igi.org



February 11, 2026
IGI Report Number **LG773660105**
Description **LABORATORY GROWN DIAMOND**
Shape and Cutting Style **MODIFIED HEXAGONAL MIXED CUT**
Measurements **10.09 X 6.21 X 4.09 MM**
GRADING RESULTS
Carat Weight **2.02 CARATS**
Color Grade **D**
Clarity Grade **VS 1**

February 11, 2026
IGI Report Number **LG773660105**
Description **LABORATORY GROWN DIAMOND**
Shape and Cutting Style **MODIFIED HEXAGONAL MIXED CUT**
Measurements **10.09 X 6.21 X 4.09 MM**

GRADING RESULTS

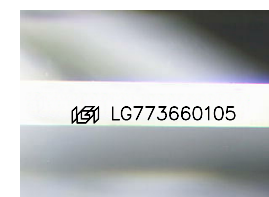
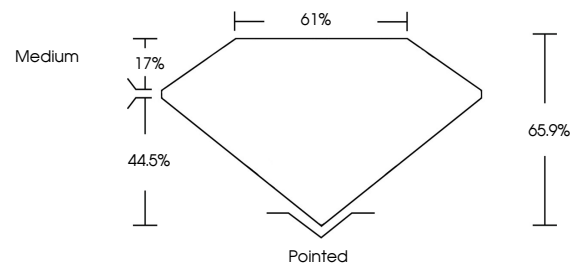
Carat Weight **2.02 CARATS**
Color Grade **D**
Clarity Grade **VS 1**

ADDITIONAL GRADING INFORMATION

Polish **EXCELLENT**
Symmetry **EXCELLENT**
Fluorescence **NONE**
Inscription(s) **IGI LG773660105**

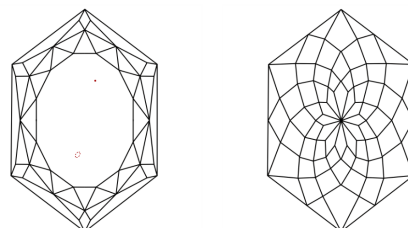
Comments: This Laboratory Grown Diamond was created by Chemical Vapor Deposition (CVD) growth process.
Type IIa

PROPORTIONS



Sample Image Used

CLARITY CHARACTERISTICS



KEY TO SYMBOLS

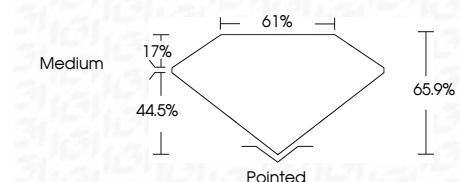
Red symbols indicate internal characteristics.
Green symbols indicate external characteristics.

COLOR

D E F G H I J Faint Very Light Light

CLARITY

FL	IF	VS ¹⁻²	VS ¹⁻²	SI ¹⁻²	I ¹⁻³
Flawless	Internally Flawless	Very Very Slightly Included	Very Slightly Included	Slightly Included	Included



ADDITIONAL GRADING INFORMATION

Polish **EXCELLENT**
Symmetry **EXCELLENT**
Fluorescence **NONE**
Inscription(s) **IGI LG773660105**
Comments: This Laboratory Grown Diamond was created by Chemical Vapor Deposition (CVD) growth process.
Type IIa



February 11, 2026
IGI Report No LG773660105
MODIFIED HEXAGONAL MIXED CUT
2.02 CARATS
D
Color Grade D
Clarity Grade VS 1
Depth 44.5%
Table 17%
Girdle Medium
Pointed
Culet EXCELLENT
Polish EXCELLENT
Symmetry EXCELLENT
Fluorescence NONE
Inscription(s) IGI LG773660105
Comments: This Laboratory Grown Diamond was created by Chemical Vapor Deposition (CVD) growth process.
Type IIa