



ELECTRONIC COPY

LABORATORY GROWN DIAMOND REPORT

February 11, 2026
IGI Report Number LG773659382
Description LABORATORY GROWN DIAMOND
Shape and Cutting Style EMERALD CUT
Measurements 10.96 X 7.94 X 5.22 MM

GRADING RESULTS

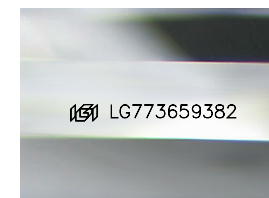
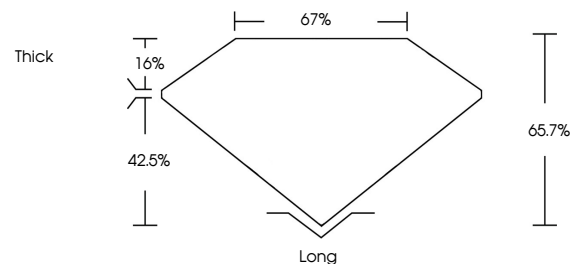
Carat Weight 5.02 CARATS
Color Grade D
Clarity Grade VS 1

ADDITIONAL GRADING INFORMATION

Polish EXCELLENT
Symmetry EXCELLENT
Fluorescence NONE
Inscription(s) IGI LG773659382

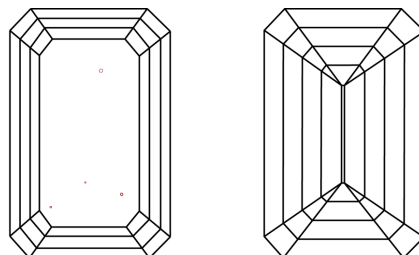
Comments: This Laboratory Grown Diamond was created by Chemical Vapor Deposition (CVD) growth process. Type IIa

PROPORTIONS



Sample Image Used

CLARITY CHARACTERISTICS



KEY TO SYMBOLS

Red symbols indicate internal characteristics.
Green symbols indicate external characteristics.

COLOR

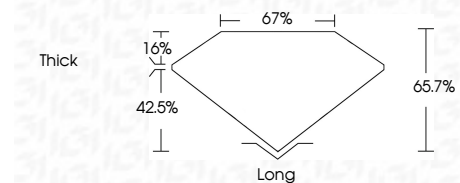
D E F G H I J Faint Very Light Light

CLARITY

FL IF VS 1-2 VS 2-3 SI 1-2 I 1-3
Flawless Internally Flawless Very Very Slightly Included Very Slightly Included Slightly Included Included



February 11, 2026
IGI Report Number LG773659382
Description LABORATORY GROWN DIAMOND
Shape and Cutting Style EMERALD CUT
Measurements 10.96 X 7.94 X 5.22 MM
GRADING RESULTS
Carat Weight 5.02 CARATS
Color Grade D
Clarity Grade VS 1



ADDITIONAL GRADING INFORMATION

Polish EXCELLENT
Symmetry EXCELLENT
Fluorescence NONE
Inscription(s) IGI LG773659382
Comments: This Laboratory Grown Diamond was created by Chemical Vapor Deposition (CVD) growth process. Type IIa



IGI



February 11, 2026
IGI Report No LG773659382
EMERALD CUT
5.02 CARATS
D
5.02 CARATS
D
VS 1
65.7%
67%
Thick
Long
EXCELLENT
EXCELLENT
NONE
IGI LG773659382
Comments: This Laboratory Grown Diamond was created by Chemical Vapor Deposition (CVD) growth process. Type IIa