



February 9, 2026

IGI Report Number **LG773657943**

**ROUND BRILLIANT
LABORATORY GROWN DIAMOND
4.15 - 4.19 X 2.43 MM**

| | |
|----------------|------------------------|
| Carat Weight | 0.26 CARAT |
| Color Grade | D |
| Clarity Grade | VVS 2 |
| Cut Grade | EXCELLENT |
| Polish | EXCELLENT |
| Symmetry | EXCELLENT |
| Fluorescence | NONE |
| Inscription(s) | IGI LG773657943 |

Comments: This Laboratory Grown Diamond was created by Chemical Vapor Deposition (CVD) growth process. Type IIa

LABORATORY GROWN DIAMOND REPORT

| | |
|-------------------------|---------------------------------|
| February 9, 2026 | |
| IGI Report Number | LG773657943 |
| Description | LABORATORY GROWN DIAMOND |
| Shape and Cutting Style | ROUND BRILLIANT |
| Measurements | 4.15 - 4.19 X 2.43 MM |

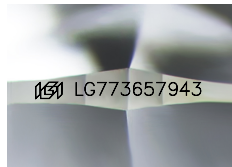
GRADING RESULTS

| | |
|---------------|-------------------|
| Carat Weight | 0.26 CARAT |
| Color Grade | D |
| Clarity Grade | VVS 2 |
| Cut Grade | EXCELLENT |

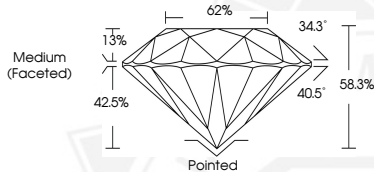
ADDITIONAL GRADING INFORMATION

| | |
|----------------|------------------------|
| Polish | EXCELLENT |
| Symmetry | EXCELLENT |
| Fluorescence | NONE |
| Inscription(s) | IGI LG773657943 |

Comments: This Laboratory Grown Diamond was created by Chemical Vapor Deposition (CVD) growth process. Type IIa



Sample Image Used



February 9, 2026

IGI Report Number **LG773657943**

**ROUND BRILLIANT
LABORATORY GROWN DIAMOND
4.15 - 4.19 X 2.43 MM**

| | |
|----------------|------------------------|
| Carat Weight | 0.26 CARAT |
| Color Grade | D |
| Clarity Grade | VVS 2 |
| Cut Grade | EXCELLENT |
| Polish | EXCELLENT |
| Symmetry | EXCELLENT |
| Fluorescence | NONE |
| Inscription(s) | IGI LG773657943 |

Comments: This Laboratory Grown Diamond was created by Chemical Vapor Deposition (CVD) growth process. Type IIa



THIS DOCUMENT WAS PRODUCED WITH THE FOLLOWING SECURITY MEASURES: SPECIAL DOCUMENT PAPER, INK SCREENS, WATERMARK, BACKGROUND DESIGNS, HOLOGRAM AND OTHER SECURITY FEATURES NOT LISTED AND DO EXCEED DOCUMENT SECURITY INDUSTRY GUIDELINES.