



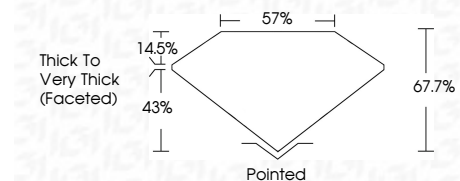
ELECTRONIC COPY

LG773654455
Report verification at igi.org



February 14, 2026
IGI Report Number **LG773654455**
Description **LABORATORY GROWN DIAMOND**
Shape and Cutting Style **PEAR MODIFIED BRILLIANT**
Measurements **7.73 X 5.14 X 3.48 MM**

GRADING RESULTS
Carat Weight **1.01 CARAT**
Color Grade **FANCY YELLOW**
Clarity Grade **VS 1**



ADDITIONAL GRADING INFORMATION
Polish **EXCELLENT**
Symmetry **EXCELLENT**
Fluorescence **NONE**
Inscription(s) **(IGI) LG773654455**
Comments: This Laboratory Grown Diamond was created by Chemical Vapor Deposition (CVD) growth process.



February 14, 2026
IGI Report No LG773654455
PEAR MODIFIED BRILLIANT
1.01 CARAT
FANCY YELLOW
VS 1
7.73 X 5.14 X 3.48 MM
Color Grade
Fancy Yellow
Clarity Grade
VS 1
Depth
43%
Table
14.5%
Girdle
Thick to Very Thick (Faceted)
Culet
Pointed
Polish
EXCELLENT
Symmetry
EXCELLENT
Fluorescence
NONE
Inscription(s)
(IGI) LG773654455
Comments: This Laboratory Grown Diamond was created by Chemical Vapor Deposition (CVD) growth process.

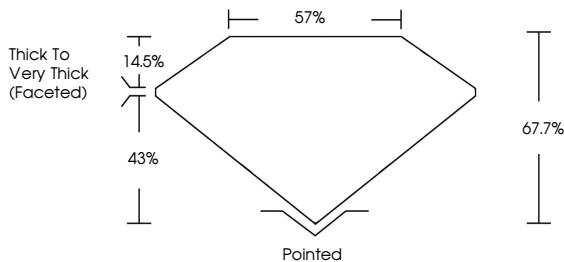
February 14, 2026
IGI Report Number **LG773654455**
Description **LABORATORY GROWN DIAMOND**
Shape and Cutting Style **PEAR MODIFIED BRILLIANT**
Measurements **7.73 X 5.14 X 3.48 MM**

GRADING RESULTS
Carat Weight **1.01 CARAT**
Color Grade **FANCY YELLOW**
Clarity Grade **VS 1**

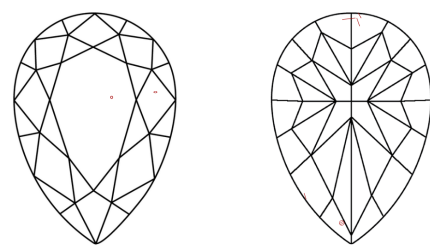
ADDITIONAL GRADING INFORMATION
Polish **EXCELLENT**
Symmetry **EXCELLENT**
Fluorescence **NONE**
Inscription(s) **(IGI) LG773654455**

Comments: This Laboratory Grown Diamond was created by Chemical Vapor Deposition (CVD) growth process.

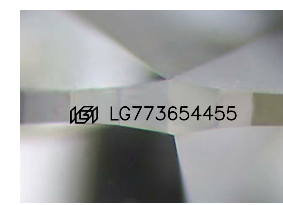
PROPORTIONS



CLARITY CHARACTERISTICS



KEY TO SYMBOLS
Red symbols indicate internal characteristics.
Green symbols indicate external characteristics.



Sample Image Used

COLOR

D	E	F	G	H	I	J	Faint	Very Light	Light
---	---	---	---	---	---	---	-------	------------	-------

CLARITY

FL	IF	VS ¹⁻²	VS ¹⁻²	SI ¹⁻²	I ¹⁻³
Flawless	Internally Flawless	Very Very Slightly Included	Very Slightly Included	Slightly Included	Included

