



ELECTRONIC COPY

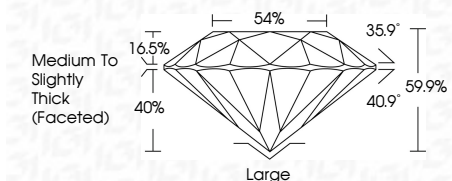
LG773648897
Report verification at igi.org



February 14, 2026
IGI Report Number **LG773648897**
Description **LABORATORY GROWN DIAMOND**
Shape and Cutting Style **ROUND BRILLIANT**
Measurements **9.25 - 9.23 X 5.53 MM**

GRADING RESULTS

Carat Weight **3.12 CARATS**
Color Grade **E**
Clarity Grade **VVS 1**
Cut Grade **FAIR**



ADDITIONAL GRADING INFORMATION

Polish **EXCELLENT**
Symmetry **EXCELLENT**
Fluorescence **NONE**
Inscription(s) **(IGI) LG773648897**
Comments: This Laboratory Grown Diamond was created by Chemical Vapor Deposition (CVD) growth process. Type IIa



February 14, 2026
IGI Report No LG773648897
ROUND BRILLIANT
9.25 - 9.23 X 5.53 MM
3.12 CARATS
E
VVS 1
FAIR
54%
Medium To Slightly Thick (Faceted)
Large
EXCELLENT
EXCELLENT
NONE
IGI LG773648897
Comments: This Laboratory Grown Diamond was created by Chemical Vapor Deposition (CVD) growth process. Type IIa

LABORATORY GROWN DIAMOND REPORT

February 14, 2026
IGI Report Number **LG773648897**
Description **LABORATORY GROWN DIAMOND**
Shape and Cutting Style **ROUND BRILLIANT**
Measurements **9.25 - 9.23 X 5.53 MM**

GRADING RESULTS

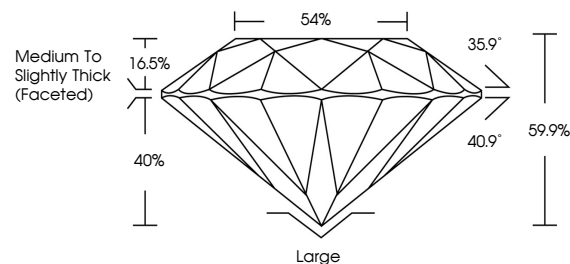
Carat Weight **3.12 CARATS**
Color Grade **E**
Clarity Grade **VVS 1**
Cut Grade **FAIR**

ADDITIONAL GRADING INFORMATION

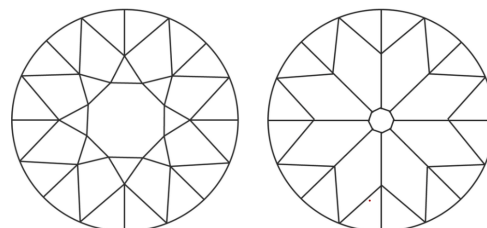
Polish **EXCELLENT**
Symmetry **EXCELLENT**
Fluorescence **NONE**
Inscription(s) **(IGI) LG773648897**

Comments: This Laboratory Grown Diamond was created by Chemical Vapor Deposition (CVD) growth process. Type IIa

PROPORTIONS

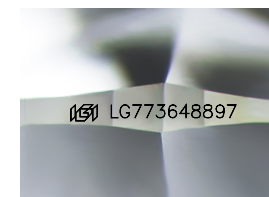


CLARITY CHARACTERISTICS



KEY TO SYMBOLS

Red symbols indicate internal characteristics.
Green symbols indicate external characteristics.



Sample Image Used

COLOR

D E F G H I J Faint Very Light Light

CLARITY

FL	IF	VVS ¹⁻²	VS ¹⁻²	SI ¹⁻²	I ¹⁻³
Flawless	Internally Flawless	Very Very Slightly Included	Very Slightly Included	Slightly Included	Included

