



ELECTRONIC COPY

LG773646492
Report verification at igi.org



February 19, 2026
IGI Report Number **LG773646492**
Description **LABORATORY GROWN DIAMOND**
Shape and Cutting Style **CUSHION MODIFIED BRILLIANT**
Measurements **16.22 X 11.62 X 8.61 MM**
GRADING RESULTS
Carat Weight **16.35 CARATS**
Color Grade **FANCY VIVID RED**
Clarity Grade **VS 2**

LABORATORY GROWN DIAMOND REPORT

February 19, 2026
IGI Report Number **LG773646492**
Description **LABORATORY GROWN DIAMOND**
Shape and Cutting Style **CUSHION MODIFIED BRILLIANT**
Measurements **16.22 X 11.62 X 8.61 MM**

GRADING RESULTS

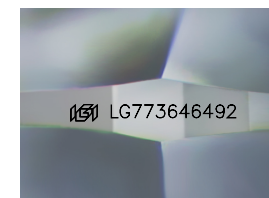
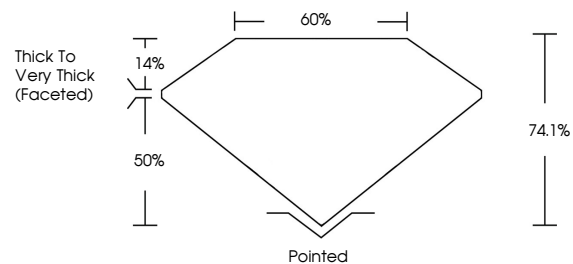
Carat Weight **16.35 CARATS**
Color Grade **FANCY VIVID RED**
Clarity Grade **VS 2**

ADDITIONAL GRADING INFORMATION

Polish **EXCELLENT**
Symmetry **EXCELLENT**
Fluorescence **VERY SLIGHT**
Inscription(s) **IGI LG773646492**

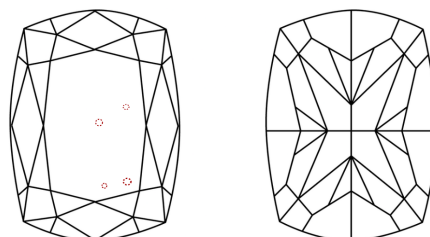
Comments: This Laboratory Grown Diamond was created by Chemical Vapor Deposition (CVD) growth process.
Indications of post-growth treatment.

PROPORTIONS



Sample Image Used

CLARITY CHARACTERISTICS



KEY TO SYMBOLS

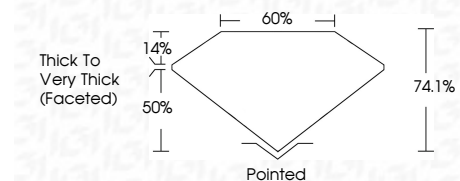
Red symbols indicate internal characteristics.
Green symbols indicate external characteristics.

COLOR

D E F G H I J Faint Very Light Light

CLARITY

FL	IF	VS ¹⁻²	VS ¹⁻²	SI ¹⁻²	I ¹⁻³
Flawless	Internally Flawless	Very Very Slightly Included	Very Slightly Included	Slightly Included	Included



ADDITIONAL GRADING INFORMATION

Polish **EXCELLENT**
Symmetry **EXCELLENT**
Fluorescence **VERY SLIGHT**
Inscription(s) **IGI LG773646492**
Comments: This Laboratory Grown Diamond was created by Chemical Vapor Deposition (CVD) growth process.
Indications of post-growth treatment.



February 19, 2026
IGI Report No **LG773646492**
CUSHION MODIFIED BRILLIANT
16.35 CARATS
Carat Weight
Color Grade **FANCY VIVID RED**
Clarity Grade **VS 2**
Depth **74.1%**
Table **50%**
Girdle
Thick to Very Thick (Faceted)
Culet Pointed
Polish **EXCELLENT**
Symmetry **EXCELLENT**
Fluorescence **VERY SLIGHT**
Inscription(s) **IGI LG773646492**
Comments: This Laboratory Grown Diamond was created by Chemical Vapor Deposition (CVD) growth process.
Indications of post-growth treatment.