



**ELECTRONIC COPY**

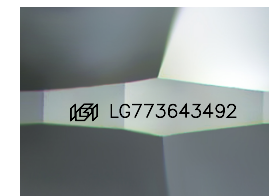
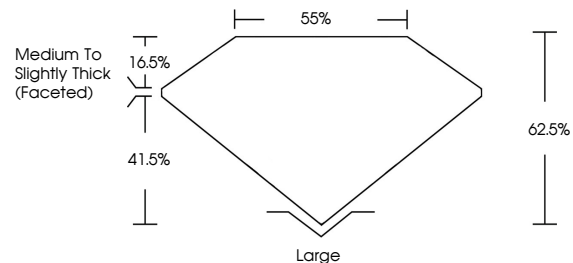
LG773643492  
Report verification at [igi.org](http://igi.org)



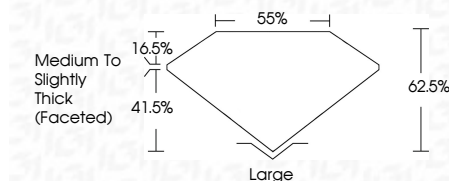
February 7, 2026  
IGI Report Number **LG773643492**  
Description **LABORATORY GROWN DIAMOND**  
Shape and Cutting Style **CUSHION MODIFIED BRILLIANT**  
Measurements **11.64 X 8.87 X 5.54 MM**  
**GRADING RESULTS**  
Carat Weight **4.33 CARATS**  
Color Grade **D**  
Clarity Grade **VVS 2**

February 7, 2026  
IGI Report Number **LG773643492**  
Description **LABORATORY GROWN DIAMOND**  
Shape and Cutting Style **CUSHION MODIFIED BRILLIANT**  
Measurements **11.64 X 8.87 X 5.54 MM**  
**GRADING RESULTS**  
Carat Weight **4.33 CARATS**  
Color Grade **D**  
Clarity Grade **VVS 2**

**PROPORTIONS**



Sample Image Used



**ADDITIONAL GRADING INFORMATION**

Polish **EXCELLENT**  
Symmetry **EXCELLENT**  
Fluorescence **NONE**  
Inscription(s) **IGI LG773643492**

Comments: This Laboratory Grown Diamond was created by Chemical Vapor Deposition (CVD) growth process.  
Type IIa

**ADDITIONAL GRADING INFORMATION**

Polish **EXCELLENT**  
Symmetry **EXCELLENT**  
Fluorescence **NONE**  
Inscription(s) **IGI LG773643492**  
Comments: This Laboratory Grown Diamond was created by Chemical Vapor Deposition (CVD) growth process.  
Type IIa

**COLOR**

D E F G H I J Faint Very Light Light

**CLARITY**

FL	IF	VVS <sup>1-2</sup>	VS <sup>1-2</sup>	SI <sup>1-2</sup>	I <sup>1-3</sup>
Flawless	Internally Flawless	Very Very Slightly Included	Very Slightly Included	Slightly Included	Included



**IGI**



February 7, 2026  
IGI Report No **LG773643492**  
**CUSHION MODIFIED BRILLIANT**  
**11.64 X 8.87 X 5.54 MM**  
Carat Weight **4.33 CARATS**  
Color Grade **D**  
Clarity Grade **VVS 2**  
Depth **62.5%**  
Table **55%**  
Girdle **Medium to Slightly Thick (Faceted)**  
Culet **Large**  
Polish **EXCELLENT**  
Symmetry **EXCELLENT**  
Fluorescence **NONE**  
Inscription(s) **IGI LG773643492**  
Comments: This Laboratory Grown Diamond was created by Chemical Vapor Deposition (CVD) growth process.  
Type IIa