



ELECTRONIC COPY

LG773642643
Report verification at igi.org



March 19, 2026
IGI Report Number **LG773642643**
Description **LABORATORY GROWN DIAMOND**

Shape and Cutting Style **FREEFORM MIXED CUT**
Measurements **7.78 X 11.11 X 5.18 MM**

GRADING RESULTS
Carat Weight **2.39 CARATS**
Color Grade **G**
Clarity Grade **SI 1**

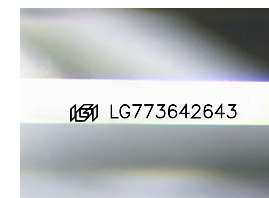
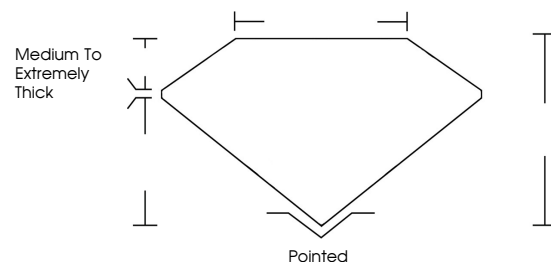
March 19, 2026
IGI Report Number **LG773642643**
Description **LABORATORY GROWN DIAMOND**
Shape and Cutting Style **FREEFORM MIXED CUT**
Measurements **7.78 X 11.11 X 5.18 MM**

GRADING RESULTS
Carat Weight **2.39 CARATS**
Color Grade **G**
Clarity Grade **SI 1**

ADDITIONAL GRADING INFORMATION
Polish **EXCELLENT**
Symmetry **EXCELLENT**
Fluorescence **NONE**
Inscription(s) **IGI LG773642643**

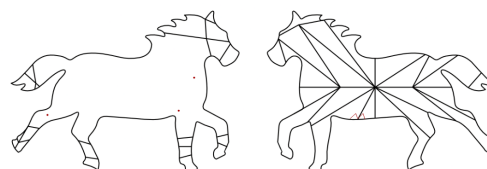
Comments: This Laboratory Grown Diamond was created by Chemical Vapor Deposition (CVD) growth process. Type IIa

PROPORTIONS



Sample Image Used

CLARITY CHARACTERISTICS



KEY TO SYMBOLS

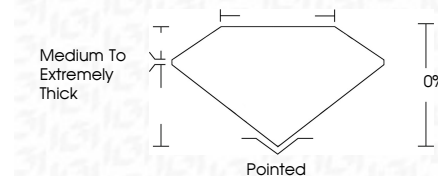
Red symbols indicate internal characteristics.
Green symbols indicate external characteristics.

COLOR

D E F G H I J Faint Very Light Light

CLARITY

FL	IF	VS ¹⁻²	VS ¹⁻²	SI ¹⁻²	I ¹⁻³
Flawless	Internally Flawless	Very Very Slightly Included	Very Slightly Included	Slightly Included	Included



ADDITIONAL GRADING INFORMATION

Polish **EXCELLENT**
Symmetry **EXCELLENT**
Fluorescence **NONE**
Inscription(s) **IGI LG773642643**
Comments: This Laboratory Grown Diamond was created by Chemical Vapor Deposition (CVD) growth process. Type IIa



March 19, 2026
IGI Report No LG773642643
FREEFORM MIXED CUT
7.78 X 11.11 X 5.18 MM
2.39 CARATS
Color Grade **G**
Clarity Grade **SI 1**
Depth **0%**
Table **0%**
Girdle **Medium to Extremely Thick**
Culet **Pointed**
Polish **EXCELLENT**
Symmetry **EXCELLENT**
Fluorescence **NONE**
Inscription(s) **IGI LG773642643**
Comments: This Laboratory Grown Diamond was created by Chemical Vapor Deposition (CVD) growth process. Type IIa