



**INTERNATIONAL  
GEMOLOGICAL  
INSTITUTE**

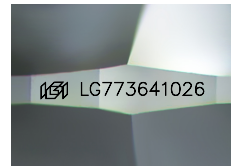
**ELECTRONIC COPY**



February 7, 2026  
**IGI Report Number** LG773641026  
**ROUND BRILLIANT**  
**LABORATORY GROWN DIAMOND**  
**4.78 - 4.83 X 2.94 MM**  
**0.42 CARAT**  
**D**  
**VVS 1**  
**IDEAL**  
**EXCELLENT**  
**EXCELLENT**  
**NONE**  
**Inscription(s)** IGI LG773641026

**LABORATORY GROWN DIAMOND REPORT**

February 7, 2026  
 IGI Report Number **LG773641026**  
 Description **LABORATORY GROWN DIAMOND**  
 Shape and Cutting Style **ROUND BRILLIANT**  
 Measurements **4.78 - 4.83 X 2.94 MM**



Sample Image Used

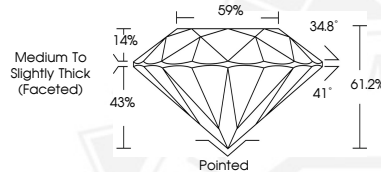
**GRADING RESULTS**

Carat Weight **0.42 CARAT**  
 Color Grade **D**  
 Clarity Grade **VVS 1**  
 Cut Grade **IDEAL**

**ADDITIONAL GRADING INFORMATION**

Polish **EXCELLENT**  
 Symmetry **EXCELLENT**  
 Fluorescence **NONE**  
 Inscription(s) **IGI LG773641026**

Comments: This Laboratory Grown Diamond was created by Chemical Vapor Deposition (CVD) growth process. Type IIa



February 7, 2026  
**IGI Report Number** LG773641026  
**ROUND BRILLIANT**  
**LABORATORY GROWN DIAMOND**  
**4.78 - 4.83 X 2.94 MM**  
**0.42 CARAT**  
**D**  
**VVS 1**  
**IDEAL**  
**EXCELLENT**  
**EXCELLENT**  
**NONE**  
**Inscription(s)** IGI LG773641026

Comments: This Laboratory Grown Diamond was created by Chemical Vapor Deposition (CVD) growth process. Type IIa

THIS DOCUMENT WAS PRODUCED WITH THE FOLLOWING SECURITY MEASURES: SPECIAL DOCUMENT PAPER, INK SCREENS, WATERMARK, BACKGROUND DESIGNS, HOLOGRAM AND OTHER SECURITY FEATURES NOT LISTED AND DO EXCEED DOCUMENT SECURITY INDUSTRY GUIDELINES.

For terms & conditions and to verify this report, please visit [www.igi.org](http://www.igi.org)