



LABORATORY GROWN DIAMOND REPORT

February 10, 2026
 IGI Report Number **LG773640870**
 Description **LABORATORY GROWN DIAMOND**
 Shape and Cutting Style **PRINCESS CUT**
 Measurements **4.88 X 4.87 X 3.53 MM**

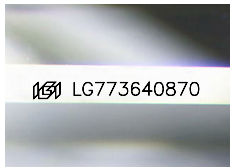
GRADING RESULTS

Carat Weight **0.74 CARAT**
 Color Grade **D**
 Clarity Grade **VS 2**

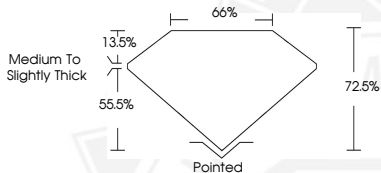
ADDITIONAL GRADING INFORMATION

Polish **EXCELLENT**
 Symmetry **EXCELLENT**
 Fluorescence **NONE**
 Inscription(s) **IGI LG773640870**

Comments: This Laboratory Grown Diamond was created by
 Chemical Vapor Deposition (CVD) growth process.
 Type IIa



Sample Image Used



February 10, 2026
 IGI Report Number **LG773640870**
PRINCESS CUT
LABORATORY GROWN DIAMOND
4.88 X 4.87 X 3.53 MM
 Carat Weight **0.74 CARAT**
 Color Grade **D**
 Clarity Grade **VS 2**
 Polish **EXCELLENT**
 Symmetry **EXCELLENT**
 Fluorescence **NONE**
 Inscription(s) **IGI LG773640870**

Comments: This Laboratory Grown
 Diamond was created by
 Chemical Vapor Deposition (CVD)
 growth process. Type IIa



February 10, 2026
 IGI Report Number **LG773640870**
PRINCESS CUT
LABORATORY GROWN DIAMOND
4.88 X 4.87 X 3.53 MM
 Carat Weight **0.74 CARAT**
 Color Grade **D**
 Clarity Grade **VS 2**
 Polish **EXCELLENT**
 Symmetry **EXCELLENT**
 Fluorescence **NONE**
 Inscription(s) **IGI LG773640870**

Comments: This Laboratory Grown
 Diamond was created by
 Chemical Vapor Deposition (CVD)
 growth process. Type IIa



THIS DOCUMENT WAS PRODUCED WITH THE FOLLOWING SECURITY MEASURES: SPECIAL DOCUMENT PAPER, INK SCREENS, WATERMARK, BACKGROUND DESIGNS, HOLOGRAM AND OTHER SECURITY FEATURES NOT LISTED AND DO EXCEED DOCUMENT SECURITY INDUSTRY GUIDELINES.