



ELECTRONIC COPY

LG773640023
Report verification at igi.org



February 13, 2026

IGI Report Number **LG773640023**

Description **LABORATORY GROWN DIAMOND**

Shape and Cutting Style **ROUND BRILLIANT**

Measurements **7.10 - 7.14 X 4.50 MM**

GRADING RESULTS

Carat Weight **1.42 CARAT**

Color Grade **E**

Clarity Grade **VS 1**

Cut Grade **EXCELLENT**

February 13, 2026

IGI Report Number **LG773640023**

Description **LABORATORY GROWN DIAMOND**

Shape and Cutting Style **ROUND BRILLIANT**

Measurements **7.10 - 7.14 X 4.50 MM**

GRADING RESULTS

Carat Weight **1.42 CARAT**

Color Grade **E**

Clarity Grade **VS 1**

Cut Grade **EXCELLENT**

ADDITIONAL GRADING INFORMATION

Polish **EXCELLENT**

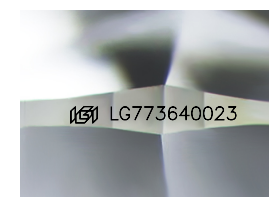
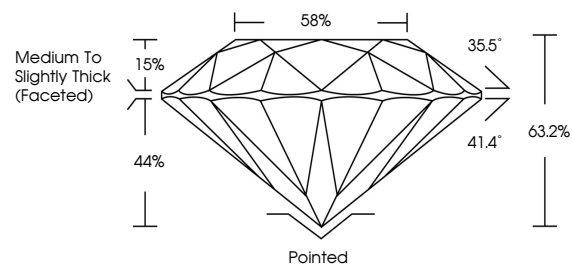
Symmetry **EXCELLENT**

Fluorescence **NONE**

Inscription(s) **IGI LG773640023**

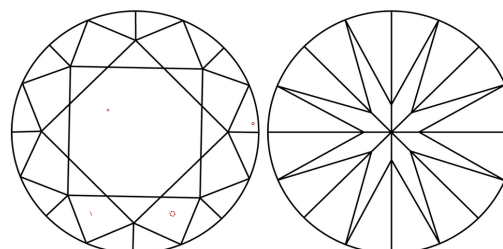
Comments: This Laboratory Grown Diamond was created by Chemical Vapor Deposition (CVD) growth process. Type IIa

PROPORTIONS



Sample Image Used

CLARITY CHARACTERISTICS



KEY TO SYMBOLS

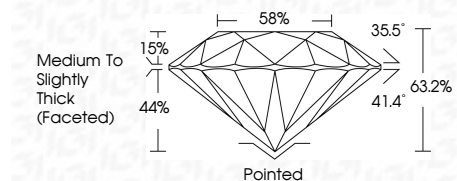
Red symbols indicate internal characteristics.
Green symbols indicate external characteristics.

COLOR

D E F G H I J Faint Very Light Light

CLARITY

| FL | IF | VS ¹⁻² | VS ¹⁻² | SI ¹⁻² | I ¹⁻³ |
|----------|---------------------|-----------------------------|------------------------|-------------------|------------------|
| Flawless | Internally Flawless | Very Very Slightly Included | Very Slightly Included | Slightly Included | Included |



ADDITIONAL GRADING INFORMATION

Polish **EXCELLENT**

Symmetry **EXCELLENT**

Fluorescence **NONE**

Inscription(s) **IGI LG773640023**

Comments: This Laboratory Grown Diamond was created by Chemical Vapor Deposition (CVD) growth process. Type IIa



IGI



| | | | | | | | | | | | | |
|-------------------|---------------------------|-----------------|-----------------------|------------|-------|-------|------------------------------------|-----------|-----------|-----------|-----------------|-----------------|
| February 13, 2026 | IGI Report No LG773640023 | ROUND BRILLIANT | 7.10 - 7.14 X 4.50 MM | 1.42 CARAT | E | VS 1 | EXCELLENT | EXCELLENT | EXCELLENT | NONE | IGI LG773640023 | |
| Carat Weight | Color Grade | Clarity Grade | Cut Grade | Depth | Table | Grade | Medium To Slightly Thick (Faceted) | Pointed | Polish | Symmetry | Fluorescence | Inscription(s) |
| | | | | 63.2% | 88% | | | EXCELLENT | EXCELLENT | EXCELLENT | NONE | IGI LG773640023 |

Comments: This Laboratory Grown Diamond was created by Chemical Vapor Deposition (CVD) growth process. Type IIa