



March 10, 2026

**IGI Report Number** LG773639394

**ROUND BRILLIANT**

**LABORATORY GROWN DIAMOND**

**5.73 - 5.77 X 3.53 MM**

|                |                 |
|----------------|-----------------|
| Carat Weight   | 0.71 CARAT      |
| Color Grade    | D               |
| Clarity Grade  | VVS 1           |
| Cut Grade      | IDEAL           |
| Polish         | EXCELLENT       |
| Symmetry       | EXCELLENT       |
| Fluorescence   | NONE            |
| Inscription(s) | IGI LG773639394 |

Comments: HEARTS & ARROWS As Grown - No indication of post-growth treatment. This Laboratory Grown Diamond was created by High Pressure High Temperature (HPHT) growth process. Type II

**LABORATORY GROWN DIAMOND REPORT**

March 10, 2026

IGI Report Number

LG773639394

Description

LABORATORY GROWN DIAMOND

Shape and Cutting Style

ROUND BRILLIANT

Measurements

5.73 - 5.77 X 3.53 MM

**GRADING RESULTS**

Carat Weight

0.71 CARAT

Color Grade

D

Clarity Grade

VVS 1

Cut Grade

IDEAL

**ADDITIONAL GRADING INFORMATION**

Polish

EXCELLENT

Symmetry

EXCELLENT

Fluorescence

NONE

Inscription(s)

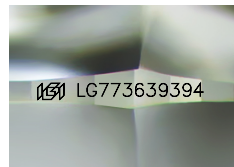
IGI LG773639394

Comments: HEARTS & ARROWS

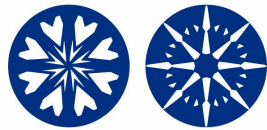
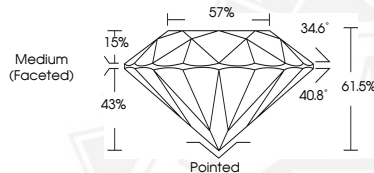
As Grown - No indication of post-growth treatment.

This Laboratory Grown Diamond was created by High Pressure High Temperature (HPHT) growth process.

Type II



Sample Image Used



HEARTS & ARROWS



March 10, 2026

**IGI Report Number** LG773639394

**ROUND BRILLIANT**

**LABORATORY GROWN DIAMOND**

**5.73 - 5.77 X 3.53 MM**

|                |                 |
|----------------|-----------------|
| Carat Weight   | 0.71 CARAT      |
| Color Grade    | D               |
| Clarity Grade  | VVS 1           |
| Cut Grade      | IDEAL           |
| Polish         | EXCELLENT       |
| Symmetry       | EXCELLENT       |
| Fluorescence   | NONE            |
| Inscription(s) | IGI LG773639394 |

Comments: HEARTS & ARROWS As Grown - No indication of post-growth treatment. This Laboratory Grown Diamond was created by High Pressure High Temperature (HPHT) growth process. Type II



THIS DOCUMENT WAS PRODUCED WITH THE FOLLOWING SECURITY MEASURES: SPECIAL DOCUMENT PAPER, INK SCREENS, WATERMARK, BACKGROUND DESIGNS, HOLOGRAM AND OTHER SECURITY FEATURES NOT LISTED AND DO EXCEED DOCUMENT SECURITY INDUSTRY GUIDELINES.