



ELECTRONIC COPY

LG773638983
Report verification at igi.org



February 24, 2026
IGI Report Number **LG773638983**
Description **LABORATORY GROWN DIAMOND**
Shape and Cutting Style **CUT CORNERED
RECTANGULAR MODIFIED
BRILLIANT**
Measurements **9.09 X 6.48 X 4.37 MM**
GRADING RESULTS
Carat Weight **2.18 CARATS**
Color Grade **FANCY VIVID BLUE**
Clarity Grade **FLAWLESS**

February 24, 2026
IGI Report Number **LG773638983**
Description **LABORATORY GROWN DIAMOND**
Shape and Cutting Style **CUT CORNERED RECTANGULAR
MODIFIED BRILLIANT**
Measurements **9.09 X 6.48 X 4.37 MM**

GRADING RESULTS

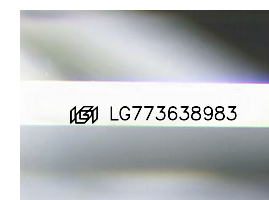
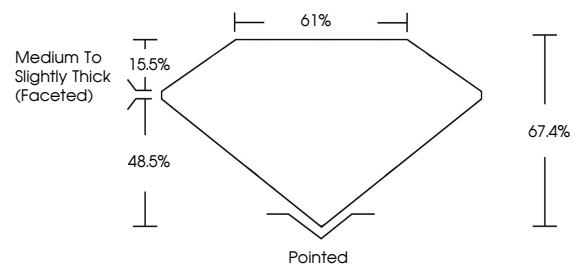
Carat Weight **2.18 CARATS**
Color Grade **FANCY VIVID BLUE**
Clarity Grade **FLAWLESS**

ADDITIONAL GRADING INFORMATION

Polish **EXCELLENT**
Symmetry **EXCELLENT**
Fluorescence **NONE**
Inscription(s) **IGI LG773638983**

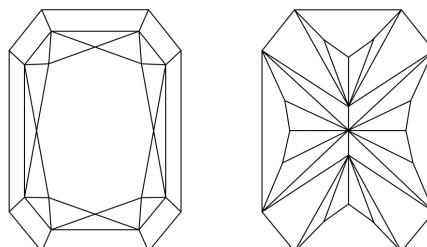
Comments: This Laboratory Grown Diamond was created by High Pressure High Temperature (HPHT) growth process. Indications of post-growth treatment.

PROPORTIONS



Sample Image Used

CLARITY CHARACTERISTICS



KEY TO SYMBOLS

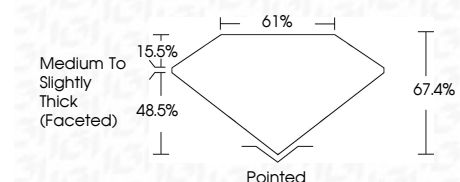
Red symbols indicate internal characteristics.
Green symbols indicate external characteristics.

COLOR

D E F G H I J Faint Very Light Light

CLARITY

FL	IF	VS ¹⁻²	VS ¹⁻²	SI ¹⁻²	I ¹⁻³
Flawless	Internally Flawless	Very Very Slightly Included	Very Slightly Included	Slightly Included	Included



ADDITIONAL GRADING INFORMATION

Polish **EXCELLENT**
Symmetry **EXCELLENT**
Fluorescence **NONE**
Inscription(s) **IGI LG773638983**
Comments: This Laboratory Grown Diamond was created by High Pressure High Temperature (HPHT) growth process. Indications of post-growth treatment.



February 24, 2026
IGI Report No LG773638983
CUT CORNERED RECT. MODIFIED BRILLIANT
9.09 X 6.48 X 4.37 MM
2.18 CARATS
FANCY VIVID BLUE
FLAWLESS
67.4%
61%
Medium to Slightly Thick (Faceted)
Pointed
EXCELLENT
EXCELLENT
NONE
IGI LG773638983
Comments: This Laboratory Grown Diamond was created by High Pressure High Temperature (HPHT) growth process. Indications of post-growth treatment.