



LABORATORY GROWN DIAMOND REPORT

February 12, 2026
 IGI Report Number **LG773632119**
 Description **LABORATORY GROWN DIAMOND**
 Shape and Cutting Style **ROUND BRILLIANT**
 Measurements **5.56 - 5.58 X 3.51 MM**

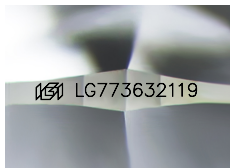
GRADING RESULTS

Carat Weight **0.67 CARAT**
 Color Grade **D**
 Clarity Grade **VVS 2**
 Cut Grade **EXCELLENT**

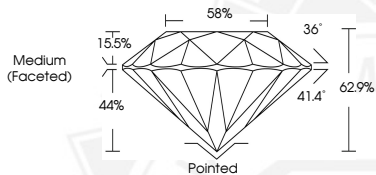
ADDITIONAL GRADING INFORMATION

Polish **EXCELLENT**
 Symmetry **EXCELLENT**
 Fluorescence **NONE**
 Inscription(s) **IGI LG773632119**

Comments: As Grown - No indication of post-growth treatment. This Laboratory Grown Diamond was created by High Pressure High Temperature (HPHT) growth process. Type II



Sample Image Used



February 12, 2026
 IGI Report Number **LG773632119**
 ROUND BRILLIANT
 LABORATORY GROWN DIAMOND
 5.56 - 5.58 X 3.51 MM
 Carat Weight **0.67 CARAT**
 Color Grade **D**
 Clarity Grade **VVS 2**
 Cut Grade **EXCELLENT**
 Polish **EXCELLENT**
 Symmetry **EXCELLENT**
 Fluorescence **NONE**
 Inscription(s) **IGI LG773632119**

Comments: As Grown - No indication of post-growth treatment. This Laboratory Grown Diamond was created by High Pressure High Temperature (HPHT) growth process. Type II



February 12, 2026
 IGI Report Number **LG773632119**
 ROUND BRILLIANT
 LABORATORY GROWN DIAMOND
 5.56 - 5.58 X 3.51 MM
 Carat Weight **0.67 CARAT**
 Color Grade **D**
 Clarity Grade **VVS 2**
 Cut Grade **EXCELLENT**
 Polish **EXCELLENT**
 Symmetry **EXCELLENT**
 Fluorescence **NONE**
 Inscription(s) **IGI LG773632119**

Comments: As Grown - No indication of post-growth treatment. This Laboratory Grown Diamond was created by High Pressure High Temperature (HPHT) growth process. Type II

THIS DOCUMENT WAS PRODUCED WITH THE FOLLOWING SECURITY MEASURES: SPECIAL DOCUMENT PAPER, INK SCREENS, WATERMARK, BACKGROUND DESIGNS, HOLOGRAM AND OTHER SECURITY FEATURES NOT LISTED AND DO EXCEED DOCUMENT SECURITY INDUSTRY GUIDELINES.