



ELECTRONIC COPY

LG773620823
Report verification at igi.org



February 13, 2026

IGI Report Number **LG773620823**

Description **LABORATORY GROWN DIAMOND**

Shape and Cutting Style **CUT CORNERED
RECTANGULAR MODIFIED
BRILLIANT**

Measurements **17.91 X 12.05 X 7.39 MM**

GRADING RESULTS

Carat Weight **14.02 CARATS**

Color Grade **FANCY INTENSE PINK**

Clarity Grade **VVS 2**

February 13, 2026
IGI Report Number **LG773620823**
Description **LABORATORY GROWN DIAMOND**
Shape and Cutting Style **CUT CORNERED RECTANGULAR
MODIFIED BRILLIANT**
Measurements **17.91 X 12.05 X 7.39 MM**

GRADING RESULTS

Carat Weight **14.02 CARATS**

Color Grade **FANCY INTENSE PINK**

Clarity Grade **VVS 2**

ADDITIONAL GRADING INFORMATION

Polish **VERY GOOD**

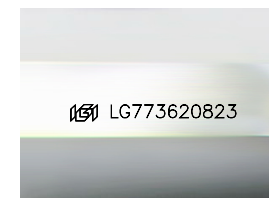
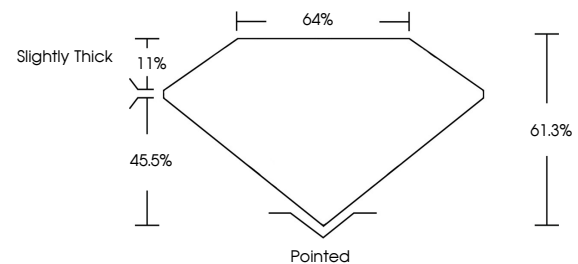
Symmetry **EXCELLENT**

Fluorescence **STRONG**

Inscription(s) **IGI LG773620823**

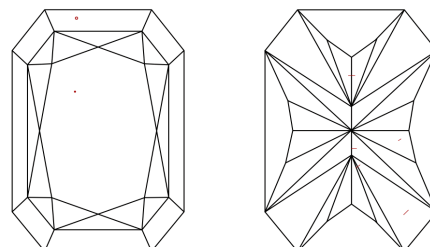
Comments: This Laboratory Grown Diamond was created by Chemical Vapor Deposition (CVD) growth process. Indications of post-growth treatment.

PROPORTIONS



Sample Image Used

CLARITY CHARACTERISTICS



KEY TO SYMBOLS

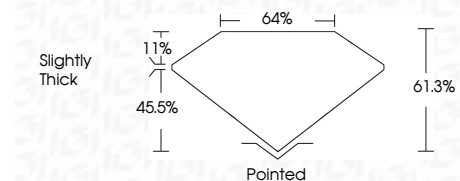
Red symbols indicate internal characteristics.
Green symbols indicate external characteristics.

COLOR

D E F G H I J Faint Very Light Light

CLARITY

FL	IF	VVS ¹⁻²	VS ¹⁻²	SI ¹⁻²	I ¹⁻³
Flawless	Internally Flawless	Very Very Slightly Included	Very Slightly Included	Slightly Included	Included



ADDITIONAL GRADING INFORMATION

Polish **VERY GOOD**

Symmetry **EXCELLENT**

Fluorescence **STRONG**

Inscription(s) **IGI LG773620823**

Comments: This Laboratory Grown Diamond was created by Chemical Vapor Deposition (CVD) growth process. Indications of post-growth treatment.



February 13, 2026
IGI Report No LG773620823
CUT CORNERED RECT. MODIFIED BRILLIANT
14.02 CARATS
FANCY INTENSE PINK
VVS 2
61.3%
64%
Slightly Thick
Pointed
VERY GOOD
EXCELLENT
STRONG
IGI LG773620823
Comments: This Laboratory Grown Diamond was created by Chemical Vapor Deposition (CVD) growth process. Indications of post-growth treatment.