



ELECTRONIC COPY

LG773620807
Report verification at igi.org



February 13, 2026
IGI Report Number **LG773620807**
Description **LABORATORY GROWN DIAMOND**
Shape and Cutting Style **CUT CORNERED
RECTANGULAR MODIFIED
BRILLIANT**
Measurements **14.15 X 9.50 X 6.30 MM**
GRADING RESULTS
Carat Weight **7.58 CARATS**
Color Grade **FANCY VIVID PINK**
Clarity Grade **VVS 2**

February 13, 2026
IGI Report Number **LG773620807**
Description **LABORATORY GROWN DIAMOND**
Shape and Cutting Style **CUT CORNERED RECTANGULAR
MODIFIED BRILLIANT**
Measurements **14.15 X 9.50 X 6.30 MM**

GRADING RESULTS

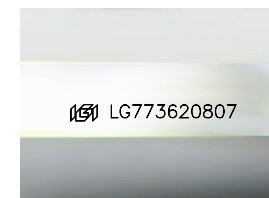
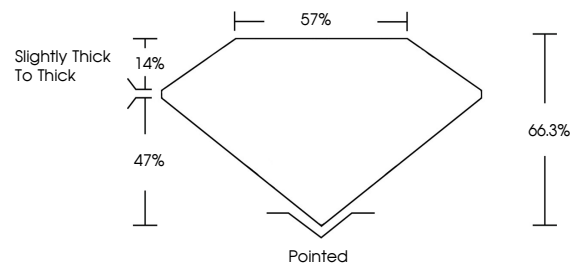
Carat Weight **7.58 CARATS**
Color Grade **FANCY VIVID PINK**
Clarity Grade **VVS 2**

ADDITIONAL GRADING INFORMATION

Polish **EXCELLENT**
Symmetry **EXCELLENT**
Fluorescence **STRONG**
Inscription(s) **IGI LG773620807**

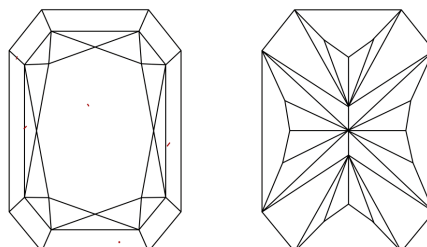
Comments: This Laboratory Grown Diamond was created by Chemical Vapor Deposition (CVD) growth process. Indications of post-growth treatment.

PROPORTIONS



Sample Image Used

CLARITY CHARACTERISTICS



KEY TO SYMBOLS

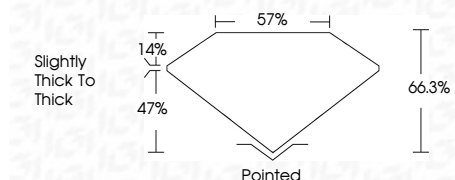
Red symbols indicate internal characteristics.
Green symbols indicate external characteristics.

COLOR

D E F G H I J Faint Very Light Light

CLARITY

FL	IF	VVS ¹⁻²	VS ¹⁻²	SI ¹⁻²	I ¹⁻³
Flawless	Internally Flawless	Very Very Slightly Included	Very Slightly Included	Slightly Included	Included



ADDITIONAL GRADING INFORMATION

Polish **EXCELLENT**
Symmetry **EXCELLENT**
Fluorescence **STRONG**
Inscription(s) **IGI LG773620807**
Comments: This Laboratory Grown Diamond was created by Chemical Vapor Deposition (CVD) growth process. Indications of post-growth treatment.



February 13, 2026
IGI Report No LG773620807
CUT CORNERED RECT. MODIFIED BRILLIANT
14.15 X 9.50 X 6.30 MM
7.58 CARATS
FANCY VIVID PINK
VVS 2
66.3%
57%
Slightly thick to thick
Pointed
EXCELLENT
EXCELLENT
STRONG
IGI LG773620807

Comments: This Laboratory Grown Diamond was created by Chemical Vapor Deposition (CVD) growth process. Indications of post-growth treatment.