



ELECTRONIC COPY

LABORATORY GROWN DIAMOND REPORT

February 6, 2026  
IGI Report Number LG773620795  
Description LABORATORY GROWN DIAMOND  
Shape and Cutting Style CUT CORNERED SQUARE MODIFIED BRILLIANT  
Measurements 9.70 X 9.66 X 6.42 MM

GRADING RESULTS

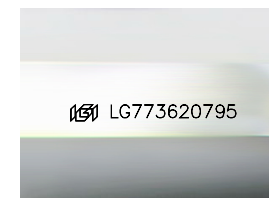
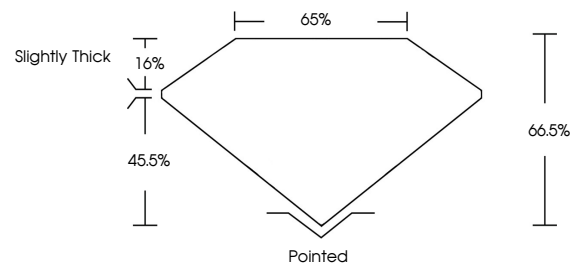
Carat Weight 5.20 CARATS  
Color Grade E  
Clarity Grade VVS 1

ADDITIONAL GRADING INFORMATION

Polish EXCELLENT  
Symmetry EXCELLENT  
Fluorescence NONE  
Inscription(s) IGI LG773620795

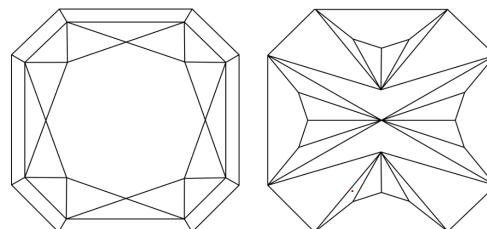
Comments: This Laboratory Grown Diamond was created by Chemical Vapor Deposition (CVD) growth process.  
Type IIa

PROPORTIONS



Sample Image Used

CLARITY CHARACTERISTICS



KEY TO SYMBOLS

Red symbols indicate internal characteristics.  
Green symbols indicate external characteristics.

COLOR

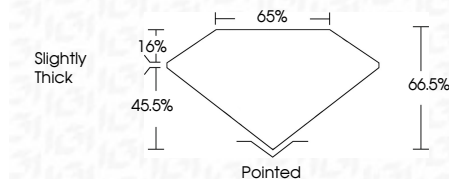
D E F G H I J Faint Very Light Light

CLARITY

FL IF VVS<sup>1-2</sup> VS<sup>1-2</sup> SI<sup>1-2</sup> I<sup>1-3</sup>  
Flawless Internally Flawless Very Very Slightly Included Very Slightly Included Slightly Included Included



February 6, 2026  
IGI Report Number LG773620795  
Description LABORATORY GROWN DIAMOND  
Shape and Cutting Style CUT CORNERED SQUARE MODIFIED BRILLIANT  
Measurements 9.70 X 9.66 X 6.42 MM  
GRADING RESULTS  
Carat Weight 5.20 CARATS  
Color Grade E  
Clarity Grade VVS 1



ADDITIONAL GRADING INFORMATION

Polish EXCELLENT  
Symmetry EXCELLENT  
Fluorescence NONE  
Inscription(s) IGI LG773620795  
Comments: This Laboratory Grown Diamond was created by Chemical Vapor Deposition (CVD) growth process.  
Type IIa



IGI



February 6, 2026  
IGI Report No LG773620795  
CUT CORNERED SQUARE MODIFIED BRILLIANT  
9.70 X 9.66 X 6.42 MM  
5.20 CARATS E  
Carat Weight 5.20  
Color Grade E  
Clarity Grade VVS 1  
Depth 66.5%  
Table 65%  
Girdle Slightly Thick  
Culet Pointed  
Polish EXCELLENT  
Symmetry EXCELLENT  
Fluorescence NONE  
Inscription(s) IGI LG773620795

Comments: This Laboratory Grown Diamond was created by Chemical Vapor Deposition (CVD) growth process.  
Type IIa