



ELECTRONIC COPY

LG773620618
Report verification at igi.org



February 10, 2026

IGI Report Number **LG773620618**

Description **LABORATORY GROWN DIAMOND**

Shape and Cutting Style **ROUND BRILLIANT**

Measurements **7.27 - 7.31 X 4.60 MM**

GRADING RESULTS

Carat Weight **1.53 CARAT**

Color Grade **E**

Clarity Grade **VS 1**

Cut Grade **EXCELLENT**

February 10, 2026

IGI Report Number **LG773620618**

Description **LABORATORY GROWN DIAMOND**

Shape and Cutting Style **ROUND BRILLIANT**

Measurements **7.27 - 7.31 X 4.60 MM**

GRADING RESULTS

Carat Weight **1.53 CARAT**

Color Grade **E**

Clarity Grade **VS 1**

Cut Grade **EXCELLENT**

ADDITIONAL GRADING INFORMATION

Polish **EXCELLENT**

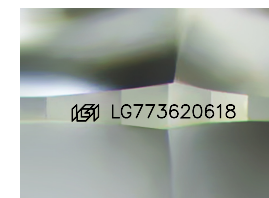
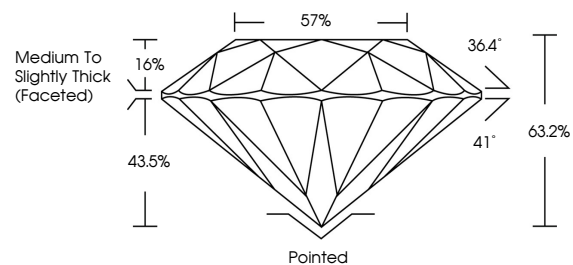
Symmetry **EXCELLENT**

Fluorescence **NONE**

Inscription(s) **IGI LG773620618**

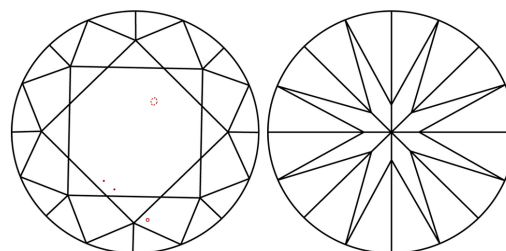
Comments: This Laboratory Grown Diamond was created by Chemical Vapor Deposition (CVD) growth process.
Type IIa

PROPORTIONS



Sample Image Used

CLARITY CHARACTERISTICS



KEY TO SYMBOLS

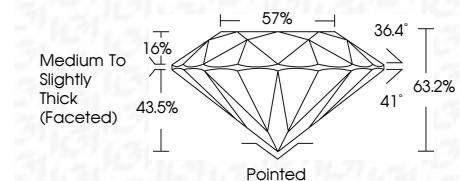
Red symbols indicate internal characteristics.
Green symbols indicate external characteristics.

COLOR

D E F G H I J Faint Very Light Light

CLARITY

FL	IF	VS ¹⁻²	VS ¹⁻²	SI ¹⁻²	I ¹⁻³
Flawless	Internally Flawless	Very Very Slightly Included	Very Slightly Included	Slightly Included	Included



ADDITIONAL GRADING INFORMATION

Polish **EXCELLENT**

Symmetry **EXCELLENT**

Fluorescence **NONE**

Inscription(s) **IGI LG773620618**

Comments: This Laboratory Grown Diamond was created by Chemical Vapor Deposition (CVD) growth process.
Type IIa



IGI



February 10, 2026	IGI Report No LG773620618	ROUND BRILLIANT	7.27 - 7.31 X 4.60 MM	1.53 CARAT	E	VS 1	EXCELLENT	EXCELLENT	EXCELLENT	NONE	IGI LG773620618
IGI	IGI	IGI	IGI	IGI	IGI	IGI	IGI	IGI	IGI	IGI	IGI

Comments: This Laboratory Grown Diamond was created by Chemical Vapor Deposition (CVD) growth process.
Type IIa