



**ELECTRONIC COPY**

LG773618899  
Report verification at igi.org



February 6, 2026

IGI Report Number **LG773618899**

Description **LABORATORY GROWN DIAMOND**

Shape and Cutting Style **ROUND BRILLIANT**

Measurements **6.56 - 6.60 X 4.03 MM**

**GRADING RESULTS**

Carat Weight **1.07 CARAT**

Color Grade **D**

Clarity Grade **VS 2**

Cut Grade **EXCELLENT**

February 6, 2026

IGI Report Number **LG773618899**

Description **LABORATORY GROWN DIAMOND**

Shape and Cutting Style **ROUND BRILLIANT**

Measurements **6.56 - 6.60 X 4.03 MM**

**GRADING RESULTS**

Carat Weight **1.07 CARAT**

Color Grade **D**

Clarity Grade **VS 2**

Cut Grade **EXCELLENT**

**ADDITIONAL GRADING INFORMATION**

Polish **EXCELLENT**

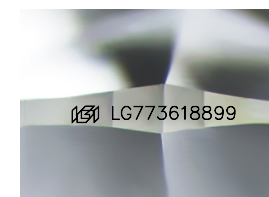
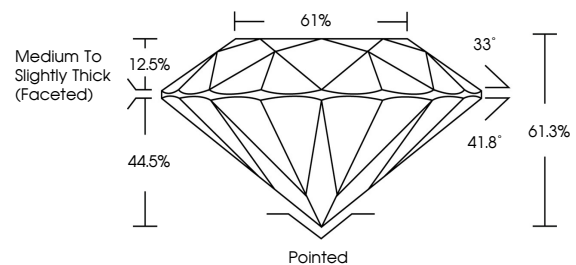
Symmetry **EXCELLENT**

Fluorescence **NONE**

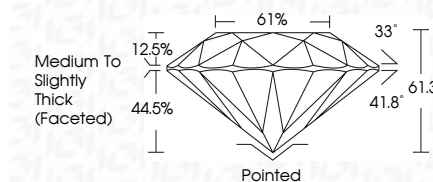
Inscription(s) **LG773618899**

Comments: This Laboratory Grown Diamond was created by Chemical Vapor Deposition (CVD) growth process. Type IIa

**PROPORTIONS**



Sample Image Used



**COLOR**

D E F G H I J Faint Very Light Light

**CLARITY**

FL	IF	VS <sup>1-2</sup>	VS <sup>1-2</sup>	SI <sup>1-2</sup>	I <sup>1-3</sup>
Flawless	Internally Flawless	Very Very Slightly Included	Very Slightly Included	Slightly Included	Included

**ADDITIONAL GRADING INFORMATION**

Polish **EXCELLENT**

Symmetry **EXCELLENT**

Fluorescence **NONE**

Inscription(s) **LG773618899**

Comments: This Laboratory Grown Diamond was created by Chemical Vapor Deposition (CVD) growth process. Type IIa



**IGI**



February 6, 2026  
IGI Report No LG773618899  
ROUND BRILLIANT

6.56 - 6.60 X 4.03 MM  
Carat Weight  
Color Grade D  
Clarity Grade VS 2  
Cut Grade EXCELLENT  
Depth 61.3%  
Table 12.5%  
Girdle 61%  
Medium To Slightly Thick (Faceted)

Culet Pointed  
Polish EXCELLENT  
Symmetry EXCELLENT  
Fluorescence NONE  
Inscriptions(s) IGI LG773618899

Comments: This Laboratory Grown Diamond was created by Chemical Vapor Deposition (CVD) growth process. Type IIa