



ELECTRONIC COPY

LG773614903
Report verification at igi.org



February 13, 2026
IGI Report Number **LG773614903**
Description **LABORATORY GROWN DIAMOND**
Shape and Cutting Style **CUT CORNERED
RECTANGULAR MODIFIED
BRILLIANT**
Measurements **11.09 X 7.62 X 5.18 MM**
GRADING RESULTS
Carat Weight **3.71 CARATS**
Color Grade **FANCY VIVID GREEN**
Clarity Grade **VVS 1**

February 13, 2026
IGI Report Number **LG773614903**
Description **LABORATORY GROWN DIAMOND**
Shape and Cutting Style **CUT CORNERED RECTANGULAR
MODIFIED BRILLIANT**
Measurements **11.09 X 7.62 X 5.18 MM**

GRADING RESULTS

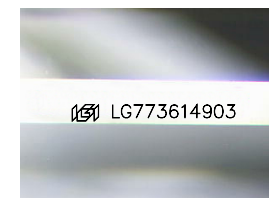
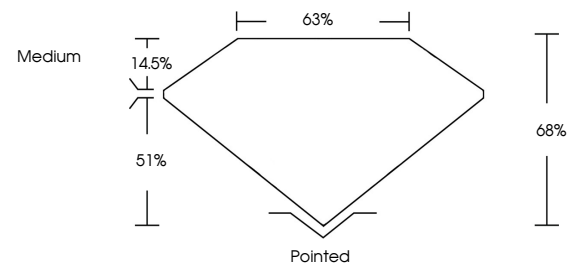
Carat Weight **3.71 CARATS**
Color Grade **FANCY VIVID GREEN**
Clarity Grade **VVS 1**

ADDITIONAL GRADING INFORMATION

Polish **EXCELLENT**
Symmetry **EXCELLENT**
Fluorescence **NONE**
Inscription(s) **IGI LG773614903**

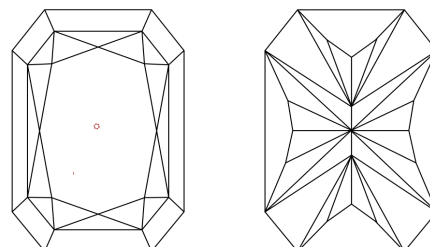
Comments: This Laboratory Grown Diamond was created by High Pressure High Temperature (HPHT) growth process. Indications of post-growth treatment.

PROPORTIONS



Sample Image Used

CLARITY CHARACTERISTICS



KEY TO SYMBOLS

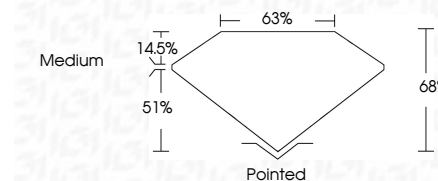
Red symbols indicate internal characteristics.
Green symbols indicate external characteristics.

COLOR

D E F G H I J Faint Very Light Light

CLARITY

FL	IF	VVS ¹⁻²	VS ¹⁻²	SI ¹⁻²	I ¹⁻³
Flawless	Internally Flawless	Very Very Slightly Included	Very Slightly Included	Slightly Included	Included



ADDITIONAL GRADING INFORMATION

Polish **EXCELLENT**
Symmetry **EXCELLENT**
Fluorescence **NONE**
Inscription(s) **IGI LG773614903**
Comments: This Laboratory Grown Diamond was created by High Pressure High Temperature (HPHT) growth process. Indications of post-growth treatment.



IGI



February 13, 2026
IGI Report No LG773614903
CUT CORNERED RECT. MODIFIED BRILLIANT
11.09 X 7.62 X 5.18 MM
3.71 CARATS
FANCY VIVID GREEN
VVS 1
68%
63%
Medium
Pointed
EXCELLENT
EXCELLENT
NONE
IGI LG773614903

Comments: This Laboratory Grown Diamond was created by High Pressure High Temperature (HPHT) growth process. Indications of post-growth treatment.