



ELECTRONIC COPY

LG773614256 Report verification at igi.org



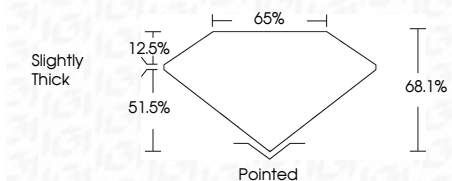
February 10, 2026 IGI Report Number LG773614256 Description LABORATORY GROWN DIAMOND

Shape and Cutting Style CUT CORNERED RECTANGULAR MODIFIED BRILLIANT

Measurements 10.75 X 7.97 X 5.43 MM

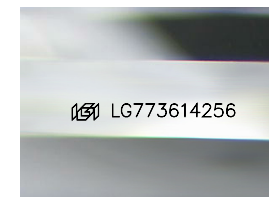
GRADING RESULTS

Carat Weight 4.01 CARATS Color Grade E Clarity Grade VS 1



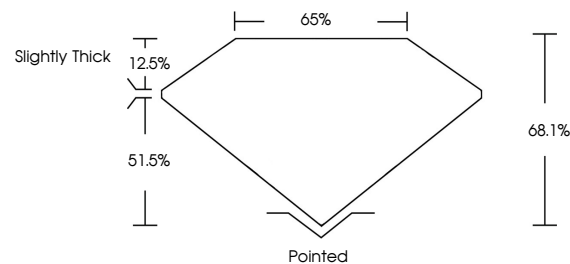
ADDITIONAL GRADING INFORMATION

Polish EXCELLENT Symmetry EXCELLENT Fluorescence NONE Inscription(s) LG773614256 Comments: This Laboratory Grown Diamond was created by Chemical Vapor Deposition (CVD) growth process. Type IIa

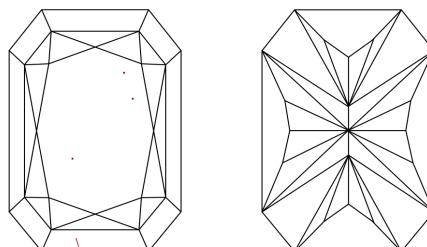


Sample Image Used

PROPORTIONS



CLARITY CHARACTERISTICS



KEY TO SYMBOLS

Red symbols indicate internal characteristics. Green symbols indicate external characteristics.

COLOR

D E F G H I J Faint Very Light Light

CLARITY

FL IF VS 1-2 VS 2-3 SI 1-2 I 1-3 Flawless Internally Flawless Very Very Slightly Included Very Slightly Included Slightly Included Included



February 10, 2026 IGI Report No LG773614256 CUT CORNERED RECT. MODIFIED BRILLIANT 10.75 X 7.97 X 5.43 MM 4.01 CARATS E VS 1 68.1% 65% Slightly Thick Pointed EXCELLENT EXCELLENT NONE NONE LG773614256 Comments: This Laboratory Grown Diamond was created by Chemical Vapor Deposition (CVD) growth process. Type IIa