



ELECTRONIC COPY

LG772697889 Report verification at igi.org



February 5, 2026 IGI Report Number LG772697889 Description LABORATORY GROWN DIAMOND Shape and Cutting Style CUT CORNERED RECTANGULAR MODIFIED BRILLIANT Measurements 8.27 X 5.69 X 3.72 MM GRADING RESULTS Carat Weight 1.51 CARAT Color Grade D Clarity Grade VVS 2

LABORATORY GROWN DIAMOND REPORT

February 5, 2026 IGI Report Number LG772697889 Description LABORATORY GROWN DIAMOND Shape and Cutting Style CUT CORNERED RECTANGULAR MODIFIED BRILLIANT Measurements 8.27 X 5.69 X 3.72 MM

GRADING RESULTS

Carat Weight 1.51 CARAT Color Grade D Clarity Grade VVS 2

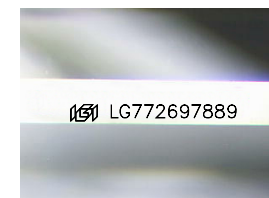
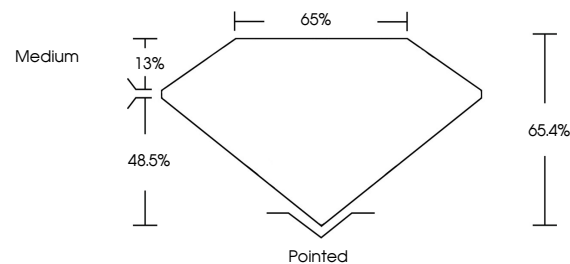
ADDITIONAL GRADING INFORMATION

Polish EXCELLENT Symmetry EXCELLENT Fluorescence NONE

Inscription(s) IGI LG772697889

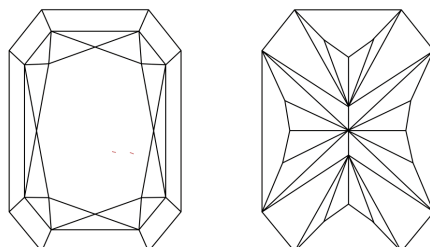
Comments: This Laboratory Grown Diamond was created by Chemical Vapor Deposition (CVD) growth process. Type IIa

PROPORTIONS



Sample Image Used

CLARITY CHARACTERISTICS



KEY TO SYMBOLS

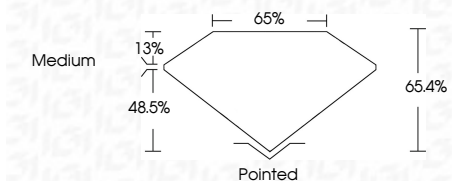
Red symbols indicate internal characteristics. Green symbols indicate external characteristics.

COLOR

D E F G H I J Faint Very Light Light

CLARITY

FL IF VVS 1-2 VS 1-2 SI 1-2 I 1-3 Flawless Internally Flawless Very Very Slightly Included Very Slightly Included Slightly Included Included



ADDITIONAL GRADING INFORMATION

Polish EXCELLENT Symmetry EXCELLENT Fluorescence NONE Inscription(s) IGI LG772697889 Comments: This Laboratory Grown Diamond was created by Chemical Vapor Deposition (CVD) growth process. Type IIa



IGI



February 5, 2026 IGI Report No LG772697889 CUT CORNERED RECT. MODIFIED BRILLIANT 8.27 X 5.69 X 3.72 MM 1.51 CARAT D VVS 2 65.4% 65% Medium Pointed EXCELLENT EXCELLENT NONE NONE IGI LG772697889

Comments: This Laboratory Grown Diamond was created by Chemical Vapor Deposition (CVD) growth process. Type IIa

