



**ELECTRONIC COPY**

LG772696614  
Report verification at igi.org



February 11, 2026

IGI Report Number **LG772696614**

Description **LABORATORY GROWN DIAMOND**

Shape and Cutting Style **CUT CORNERED  
RECTANGULAR MODIFIED  
BRILLIANT**

Measurements **9.82 X 7.28 X 4.94 MM**

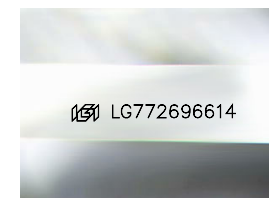
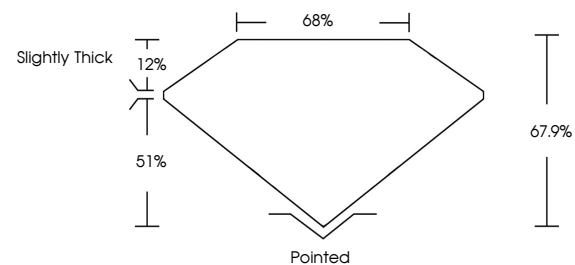
**GRADING RESULTS**

Carat Weight **3.07 CARATS**

Color Grade **D**

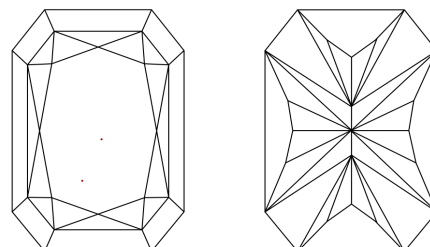
Clarity Grade **VVS 2**

**PROPORTIONS**



Sample Image Used

**CLARITY CHARACTERISTICS**



**KEY TO SYMBOLS**

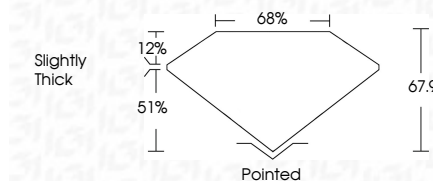
Red symbols indicate internal characteristics.  
Green symbols indicate external characteristics.

**COLOR**

D E F G H I J Faint Very Light Light

**CLARITY**

FL	IF	VVS <sup>1-2</sup>	VS <sup>1-2</sup>	SI <sup>1-2</sup>	I <sup>1-3</sup>
Flawless	Internally Flawless	Very Very Slightly Included	Very Slightly Included	Slightly Included	Included



**ADDITIONAL GRADING INFORMATION**

Polish **EXCELLENT**

Symmetry **EXCELLENT**

Fluorescence **NONE**

Inscription(s) **IGI LG772696614**

Comments: This Laboratory Grown Diamond was created by Chemical Vapor Deposition (CVD) growth process. Type IIa



**IGI**



February 11, 2026  
IGI Report No LG772696614  
CUT CORNERED RECT. MODIFIED BRILLIANT  
9.82 X 7.28 X 4.94 MM  
3.07 CARATS  
D  
VVS 2  
67.9%  
68%  
Slightly Thick  
Pointed  
EXCELLENT  
EXCELLENT  
NONE  
IGI LG772696614

Comments: This Laboratory Grown Diamond was created by Chemical Vapor Deposition (CVD) growth process. Type IIa