



ELECTRONIC COPY

LG772690304
Report verification at igi.org



February 13, 2026

IGI Report Number **LG772690304**

Description **LABORATORY GROWN DIAMOND**

Shape and Cutting Style **PRINCESS CUT**

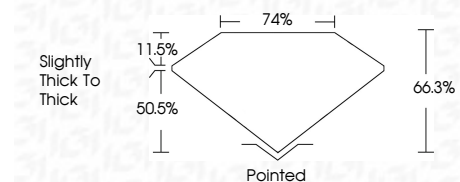
Measurements **6.60 X 6.59 X 4.37 MM**

GRADING RESULTS

Carat Weight **1.75 CARAT**

Color Grade **FANCY DEEP GREEN**

Clarity Grade **VVS 2**



ADDITIONAL GRADING INFORMATION

Polish **VERY GOOD**

Symmetry **EXCELLENT**

Fluorescence **NONE**

Inscription(s) **IGI LG772690304**

Comments: This Laboratory Grown Diamond was created by Chemical Vapor Deposition (CVD) growth process. Indications of post-growth treatment.



| | | |
|-----------------------|---------------------------|------------------|
| February 13, 2026 | IGI Report No LG772690304 | PRINCESS CUT |
| 6.60 X 6.59 X 4.37 MM | 1.75 CARAT | FANCY DEEP GREEN |
| | VVS 2 | VVS 2 |
| | 66.3% | 74% |
| | Slightly Thick To Thick | Pointed |
| | VERY GOOD | EXCELLENT |
| | NONE | NONE |
| | IGI LG772690304 | |

Comments: This Laboratory Grown Diamond was created by Chemical Vapor Deposition (CVD) growth process. Indications of post-growth treatment.

February 13, 2026
IGI Report No LG772690304
PRINCESS CUT

6.60 X 6.59 X 4.37 MM
1.75 CARAT
FANCY DEEP GREEN

VVS 2
66.3%
74%

Slightly Thick To Thick
Pointed

VERY GOOD
EXCELLENT

NONE
NONE

IGI LG772690304

Comments: This Laboratory Grown Diamond was created by Chemical Vapor Deposition (CVD) growth process. Indications of post-growth treatment.

February 13, 2026
IGI Report No LG772690304
PRINCESS CUT

6.60 X 6.59 X 4.37 MM
1.75 CARAT
FANCY DEEP GREEN

VVS 2
66.3%
74%

Slightly Thick To Thick
Pointed

VERY GOOD
EXCELLENT

NONE
NONE

IGI LG772690304

Comments: This Laboratory Grown Diamond was created by Chemical Vapor Deposition (CVD) growth process. Indications of post-growth treatment.

LABORATORY GROWN DIAMOND REPORT

February 13, 2026

IGI Report Number **LG772690304**

Description **LABORATORY GROWN DIAMOND**

Shape and Cutting Style **PRINCESS CUT**

Measurements **6.60 X 6.59 X 4.37 MM**

GRADING RESULTS

Carat Weight **1.75 CARAT**

Color Grade **FANCY DEEP GREEN**

Clarity Grade **VVS 2**

ADDITIONAL GRADING INFORMATION

Polish **VERY GOOD**

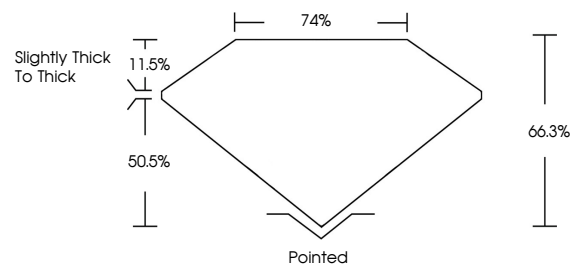
Symmetry **EXCELLENT**

Fluorescence **NONE**

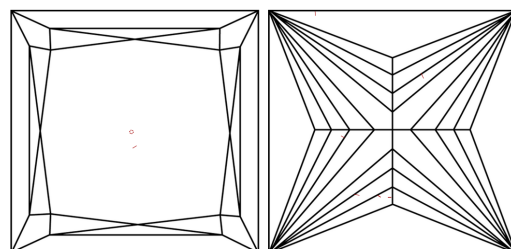
Inscription(s) **IGI LG772690304**

Comments: This Laboratory Grown Diamond was created by Chemical Vapor Deposition (CVD) growth process. Indications of post-growth treatment.

PROPORTIONS

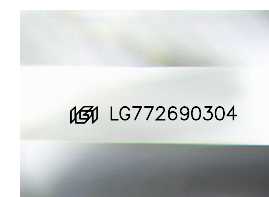


CLARITY CHARACTERISTICS



KEY TO SYMBOLS

Red symbols indicate internal characteristics.
Green symbols indicate external characteristics.



Sample Image Used

COLOR

D E F G H I J Faint Very Light Light

CLARITY

| | | | | | |
|----------|---------------------|-----------------------------|------------------------|-------------------|------------------|
| FL | IF | VVS ¹⁻² | VS ¹⁻² | SI ¹⁻² | I ¹⁻³ |
| Flawless | Internally Flawless | Very Very Slightly Included | Very Slightly Included | Slightly Included | Included |

