



ELECTRONIC COPY

LG772690279
Report verification at igi.org



February 13, 2026

IGI Report Number **LG772690279**

Description **LABORATORY GROWN DIAMOND**

Shape and Cutting Style **PRINCESS CUT**

Measurements **7.22 X 7.16 X 5.40 MM**

GRADING RESULTS

Carat Weight **2.52 CARATS**

Color Grade **FANCY BROWN**

Clarity Grade **VS 1**

February 13, 2026
IGI Report Number **LG772690279**
Description **LABORATORY GROWN DIAMOND**
Shape and Cutting Style **PRINCESS CUT**
Measurements **7.22 X 7.16 X 5.40 MM**

GRADING RESULTS

Carat Weight **2.52 CARATS**

Color Grade **FANCY BROWN**

Clarity Grade **VS 1**

ADDITIONAL GRADING INFORMATION

Polish **VERY GOOD**

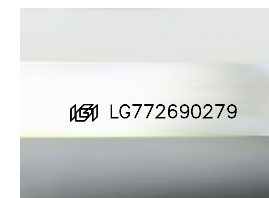
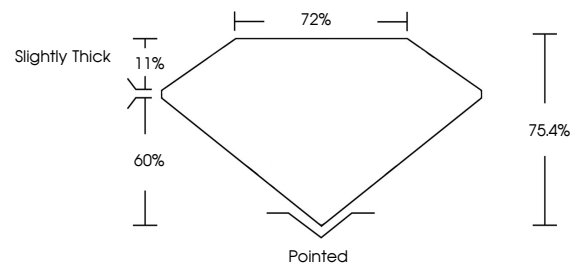
Symmetry **VERY GOOD**

Fluorescence **NONE**

Inscription(s) **IGI LG772690279**

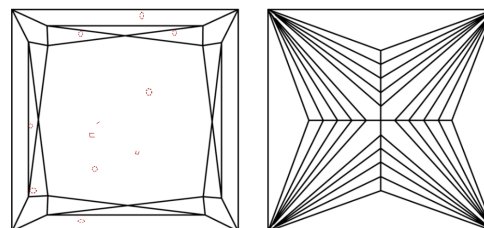
Comments: This Laboratory Grown Diamond was created by Chemical Vapor Deposition (CVD) growth process.

PROPORTIONS



Sample Image Used

CLARITY CHARACTERISTICS



KEY TO SYMBOLS

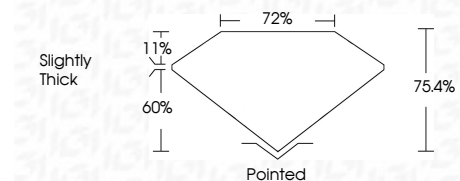
Red symbols indicate internal characteristics.
Green symbols indicate external characteristics.

COLOR

D E F G H I J Faint Very Light Light

CLARITY

FL	IF	VS ¹⁻²	VS ¹⁻²	SI ¹⁻²	I ¹⁻³
Flawless	Internally Flawless	Very Very Slightly Included	Very Slightly Included	Slightly Included	Included



ADDITIONAL GRADING INFORMATION

Polish **VERY GOOD**

Symmetry **VERY GOOD**

Fluorescence **NONE**

Inscription(s) **IGI LG772690279**

Comments: This Laboratory Grown Diamond was created by Chemical Vapor Deposition (CVD) growth process.



February 13, 2026
IGI Report No LG772690279
PRINCESS CUT

2.52 CARATS
Carat Weight
FANCY BROWN
Color Grade

VS 1
Clarity Grade
75.4%
Depth
72%
Table
Slightly Thick
Girdle

Pointed
Culet
VERY GOOD
Polish
VERY GOOD
Symmetry
NONE
Fluorescence
Inscription(s)
IGI LG772690279

Comments: This Laboratory Grown Diamond was created by Chemical Vapor Deposition (CVD) growth process.