



ELECTRONIC COPY

LG772686483
Report verification at igi.org



February 13, 2026

IGI Report Number **LG772686483**

Description **LABORATORY GROWN DIAMOND**

Shape and Cutting Style **CUT CORNERED
RECTANGULAR MODIFIED
BRILLIANT**

Measurements **7.21 X 4.94 X 3.15 MM**

GRADING RESULTS

Carat Weight **1.06 CARAT**

Color Grade **FANCY VIVID BLUE**

Clarity Grade **VS 1**

February 13, 2026

IGI Report Number **LG772686483**

Description **LABORATORY GROWN DIAMOND**

Shape and Cutting Style **CUT CORNERED RECTANGULAR
MODIFIED BRILLIANT**

Measurements **7.21 X 4.94 X 3.15 MM**

GRADING RESULTS

Carat Weight **1.06 CARAT**

Color Grade **FANCY VIVID BLUE**

Clarity Grade **VS 1**

ADDITIONAL GRADING INFORMATION

Polish **EXCELLENT**

Symmetry **EXCELLENT**

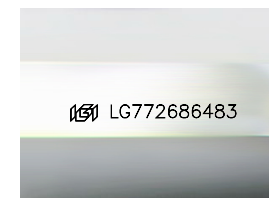
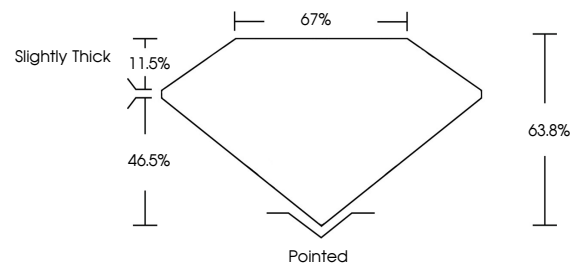
Fluorescence **NONE**

Inscription(s) **IGI LG772686483**

Comments: This Laboratory Grown Diamond was created by Chemical Vapor Deposition (CVD) growth process.

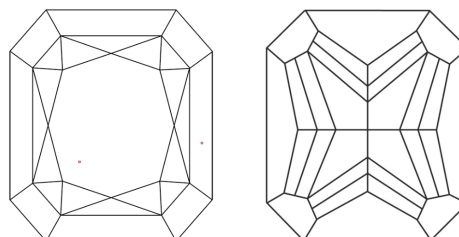
Indications of post-growth treatment.

PROPORTIONS



Sample Image Used

CLARITY CHARACTERISTICS



KEY TO SYMBOLS

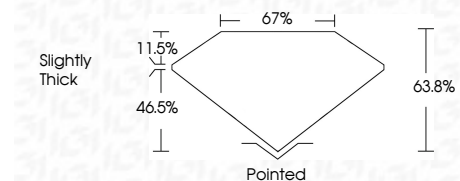
Red symbols indicate internal characteristics.
Green symbols indicate external characteristics.

COLOR

D E F G H I J Faint Very Light Light

CLARITY

FL	IF	VS ¹⁻²	VS ¹⁻²	SI ¹⁻²	I ¹⁻³
Flawless	Internally Flawless	Very Very Slightly Included	Very Slightly Included	Slightly Included	Included



ADDITIONAL GRADING INFORMATION

Polish **EXCELLENT**

Symmetry **EXCELLENT**

Fluorescence **NONE**

Inscription(s) **IGI LG772686483**

Comments: This Laboratory Grown Diamond was created by Chemical Vapor Deposition (CVD) growth process. Indications of post-growth treatment.



IGI



February 13, 2026
IGI Report No LG772686483
CUT CORNERED RECT. MODIFIED BRILLIANT
7.21 X 4.94 X 3.15 MM
1.06 CARAT
FANCY VIVID BLUE
VS 1
63.8%
67%
Slightly Thick
Pointed
EXCELLENT
EXCELLENT
NONE
IGI LG772686483

Comments: This Laboratory Grown Diamond was created by Chemical Vapor Deposition (CVD) growth process. Indications of post-growth treatment.